



**CONTAINERS
DMCC**

**OFFSHORE &
LANDCAMP
ACCOMMODATION
SOLUTIONS**

www.271-containers.com
sales@271-containers.com



CONTENTS

Introduction.....	1
271 Containers	2
Singapore, Dubai	4
Module Introduction	5
QA / QC at 271	8
32ft Accommodation Modules - Linkable Type	9
32ft A60 Accommodation Modules	11
Recreation & Heli-Lounges, Locker and Laundry Rooms	12
40ft A60 Accommodation Modules	14
271 Land Camp Buildings	16
A60 Galley & Canteen Modules	20
A0/A60 Workshop 12ft, 16ft & 20ft Units	21
H60 DNV 2.7-1 (ABS) Modules	22
A60 DNV 2.7-1 Zone 1 & 2 Engineering Cabins	23
A60 DNV 2.7-1 Zone 1 Laboratory Module	24
A60 DNV 2.7-1 Zone1 Mud Logging Unit	25
ROV Control Cabins & Workshops	26
DNV 2.7-1 Workshops & Bespoke Modules	27
A60 DNV 2.7-1 (ABS) Accommodation Block	28
271 Case Study Safe Concordia Project	30
Rental & Stock Modules	32
Shipping & Logistics	33
Container Rental	34
Generators	36



WWW.271-CONTAINERS.COM
SALES@271-CONTAINERS.COM



INTRODUCTION

OFFSHORE ACCOMMODATION SPECIALISTS

271 Containers DMCC main Head Quarter office is in Dubai UAE where we oversee other locations in Singapore, Nigeria, Angola, Brunei, Malaysia.

There are two divisions to 271 Containers DMCC one is the A60 Accommodation Modules and A60 Engineering Zone 2 Modules the other CCU Offshore DNV 2.7-1 Container Rental.

271 Containers DMCC Main Offices are based in Dubai UAE.

Currently has locations worldwide, covering Europe, West Africa, Middle East & the Far East.

Over the years the company has grown into two divisions, one being the manufacture and sale of Offshore A60 Modules for the Oil & Gas Sector as well as Offshore CCU Container's for Rental.

271 Containers DMCC keep a stock of over 40 No. A60 Accommodation Modules, which are all built to DNV 2.7-1 Certification.

These modules are 32ft long by 10ft wide and can each house up to 8 persons.

We also keep a stock of over 20 No. A60 Engineering & Technical Modules built to DNV 2.7-2 suitable for Zone 2 areas. All of 271 Containers DMCC Modules are built to A60 DNV 2.7-1 and when required DNV 2.7-2 as well as the most recent ABS regulations.

271 Containers DMCC design, manufacture and supply specialised A60 Technical Modules include A60 Zone 2 Engineering Cabins, A60 Zone 2 Mud Logging Cabin, A60/A0 Work Shops and Offshore A60 Zone 2 Laboratories.

We also design, manufacture and supply A60 Accommodation Blocks which generally include Galley, Mess Room, Laundry, Recreation, Gymnasium, Locker Rooms, Toilets, Office, Cabin and many other facilities dependant on client requirements. Individual modules are seamlessly linked together to create a Modular Accommodation Block.

271 can provide a full turn-key package including Manufacture, Supply & Installation to meet client's individual requirements and deck footprints. Modular accommodation blocks are far less expensive than traditional Monolithic single built structures as the modules are built within clean factory conditions and are easily lifted into place by relatively small yard or standard offshore cranes. This negates the requirement for fitting out accommodation within dirty yard spaces as well as the use of heavy lift cranes which have proven to be extremely expensive to utilise in the past.

271 Containers DMCC Modules are delivered as "Plug & Play" and can be hooked up to on board and site services in a matter of hours, ready to utilise or live in.

271 CONTAINERS

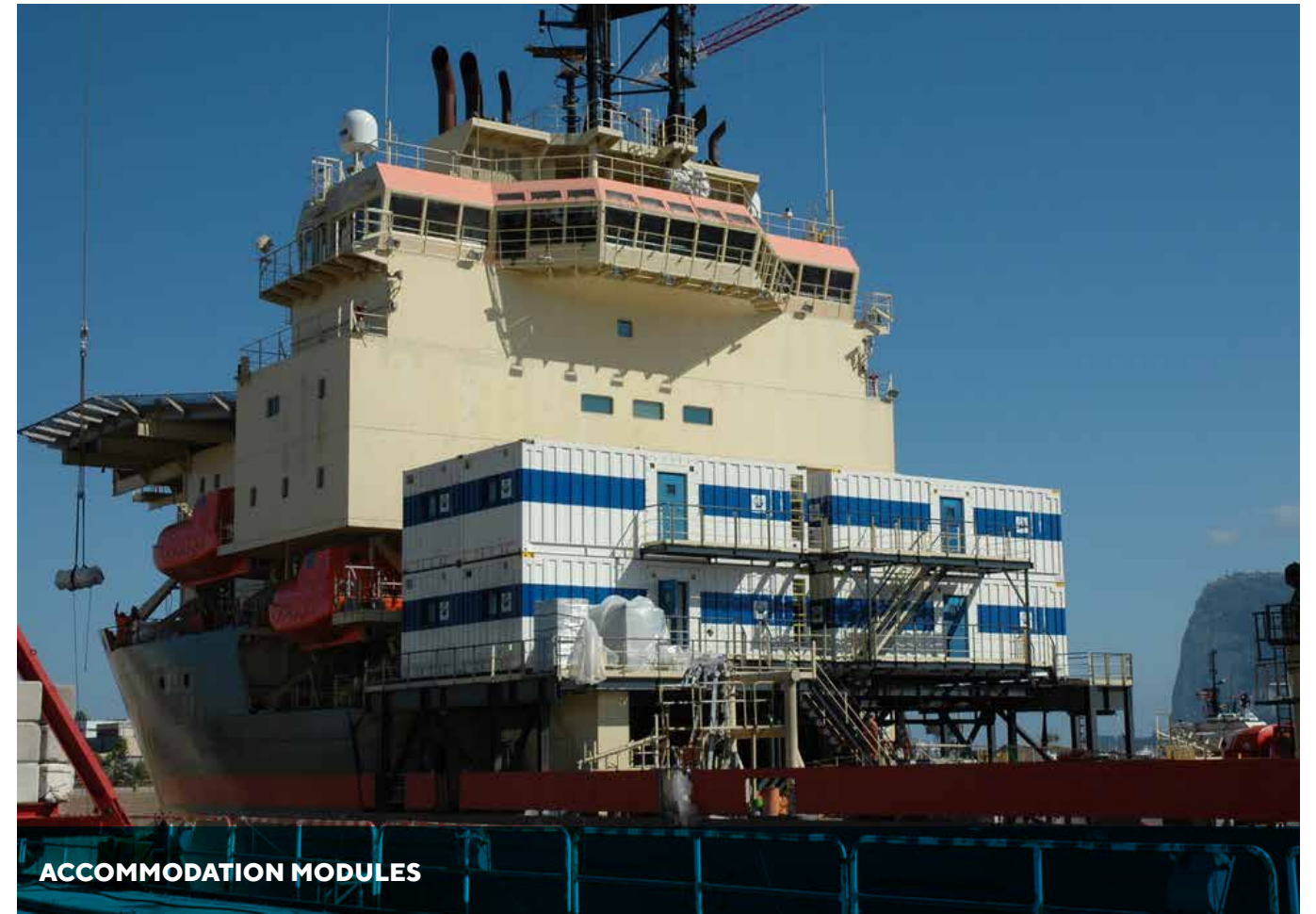
All facilities operated by 271 Containers have strict management systems in place. We work to the highest standards within Health & Safety and operate under strict quality management procedures to ensure all products meet our strict in house quality checks. Our Quality, Health, Safety and Environmental procedures comply with all current BS OHSAS 18001:2007, ISO 9001:2008 & ISO 14001:2008.

271 Containers has two large facilities in Angola & Nigeria. Both bases keep a large stock of our Offshore DNV 2.7-1 containers where we have long term 5 Year + contracts in place. We have supplied products to a number of major Oil companies operating in West Africa for several years.

As per the photos below, the depots in Angola and Nigeria are purpose built for the Oil & Gas Sector and are also located in strategic locations for shipping of the containers to and from local ports to customers facilities.

OUR CURRENT DEPOTS:

UAE MIDDLE EAST SINGAPORE FAR EAST WEST AFRICA EUROPE



ACCOMMODATION MODULES



LIVING QUARTER MODULE BLOCK

SINGAPORE & DUBAI

271 has a presence in all the major oil and gas producing regions of the world, offering our clients local sales teams who are able to provide a professional and face to face service for all client enquiries at any location around the world.

271 CONTAINERS DUBAI, UAE

The Middle East is a huge market and our sales office in Dubai caters for clients in Abu Dhabi, Sharjah, Saudi Arabia, Qatar, Iraq, Oman and Egypt. As with Singapore, Dubai has modules instock and available for sale or rental, for those customers needing an immediate solution.

271 CONTAINERS SINGAPORE

Singapore is one of the leading shipbuilding nations in the world and our office is involved in many projects in this region: FPSO's; drill ships; vessel conversions; rig upgrades and refurbishment; new builds and barge work.



MODULE INTRODUCTION

Modules are an efficient and economical solution, offering safe and comfortable living environments on board all types of fixed & floating installations: oil & gas platforms; semi submersibles; PSVs; barges; Survey ships and other types of vessels.

By using modules instead of the more traditional 'block' structures offer clients a more flexible approach to providing additional or new accommodation on board. Modules are more manoeuvrable and light weight and can be lifted on and off by existing platform or vessel cranes. This allows installation projects to be carried out 12 months of the year and does away with the need to employ 'heavy lift' crane barges, which are expensive to hire and can have long mobilisation times, wherever the project is located. Modules are designed and built to strict DNV 2.7-1 / EN12079 certification and every 271 module is supplied with a full set of DNV certified slings and shackles.

271 Containers modules are inspected and tested at each stage of the production process by DNV or ABS surveyors.

271 Containers has standard module layouts for most applications. These layouts can be adapted to suit almost any requirement offshore and customers' specific needs.

All module fabrication and manufacturing processes follow strict quality control procedures and we have our own in-house engineers for all stages of production: structural, HVAC, electrical (ATEX Certified), piping and outfitting.

Modules take 8 weeks to build from start to finish: from the first steel being cut to final completion and sign off by DNV / ABS inspectors.

271 Containers has the capacity to build over 240 DNV 2.7-1 certified accommodation modules each year, which will increase once the second factory becomes operational later this year.



MODULE INTRODUCTION



PRODUCTION LINE FOR A60 ACCOMMODATION MODULES



10 OFF A60 MODULES BUILT INTO 80 POB BLOCK CERTIFIED TO DNV 2.7-1 WITH WALK WAY



A60 MODULES LINKED TOGETHER CREATING AN INTERNAL CORRIDOR



A60 MODULES LINKED TOGETHER DURING QC INSPECTION



CABINS FITTED WITH MODERN BUNKS WITH 4 BUNKS PER MODULE



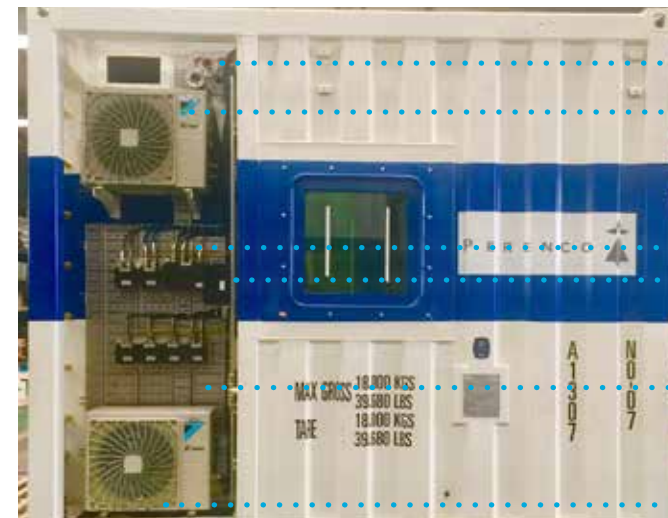
PULLMAN BUNKS FITTED TO CABINS WITH HIGH QUALITY LAMINATE ON WALLS ALL FIRE CERTIFIED.



TOILET POD IN EACH CABIN WITH SHOWER, WC, SINK. ALL TO MARINE STANDARD WITH TILED FLOOR.



PRODUCTION LINE UNDER COVER TO CREATE A SMOOTH AND FAST OUTFITTING



Water Inlet, Sprinkler, Toilet

Condensor

Hook Up Area of the Module is where the air condensers are installed and all electrical connections are

Junction Box

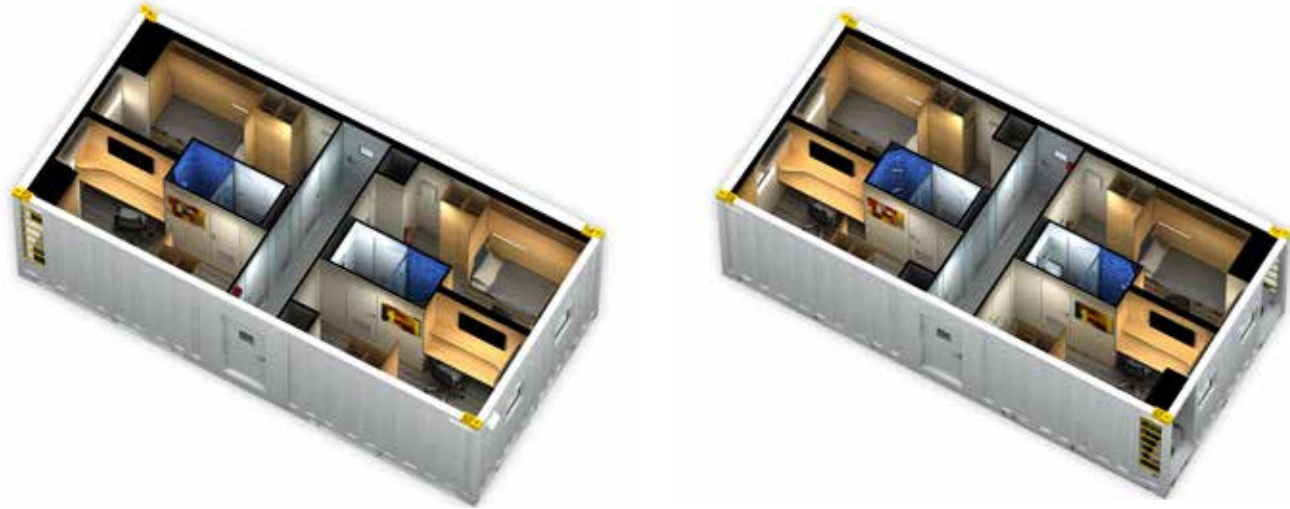
Main Power Supply

Condensor

Black & Grey Water

TITLE

Otati nonsequit eaquissit quis quid eum experfe rectum quae nit proreped eum quo qui qui dus eos esentot asperi optat volorio. Nam eribusant aut et aut minusdae demquistet quae repuda volorem abor minihilit et et quis undi atur, sumque cusdant aspis dellore perchic totas parunt fuga. Nem et reptatist



DESCRIPTION

DESCRIPTION



DESCRIPTION



DESCRIPTION



DESCRIPTION

TITLE

Otati nonsequit eaquissit quis quid eum experfe rectum quae nit proreped eum quo qui qui dus eos esentot asperi optat volorio. Nam eribusant aut et aut minusdae demquistet quae repuda volorem abor minihilit et et quis undi atur, sumque cusdant aspis dellore perchic totas parunt fuga. Nem et reptatist



DESCRIPTION



DESCRIPTION



DESCRIPTION



DESCRIPTION



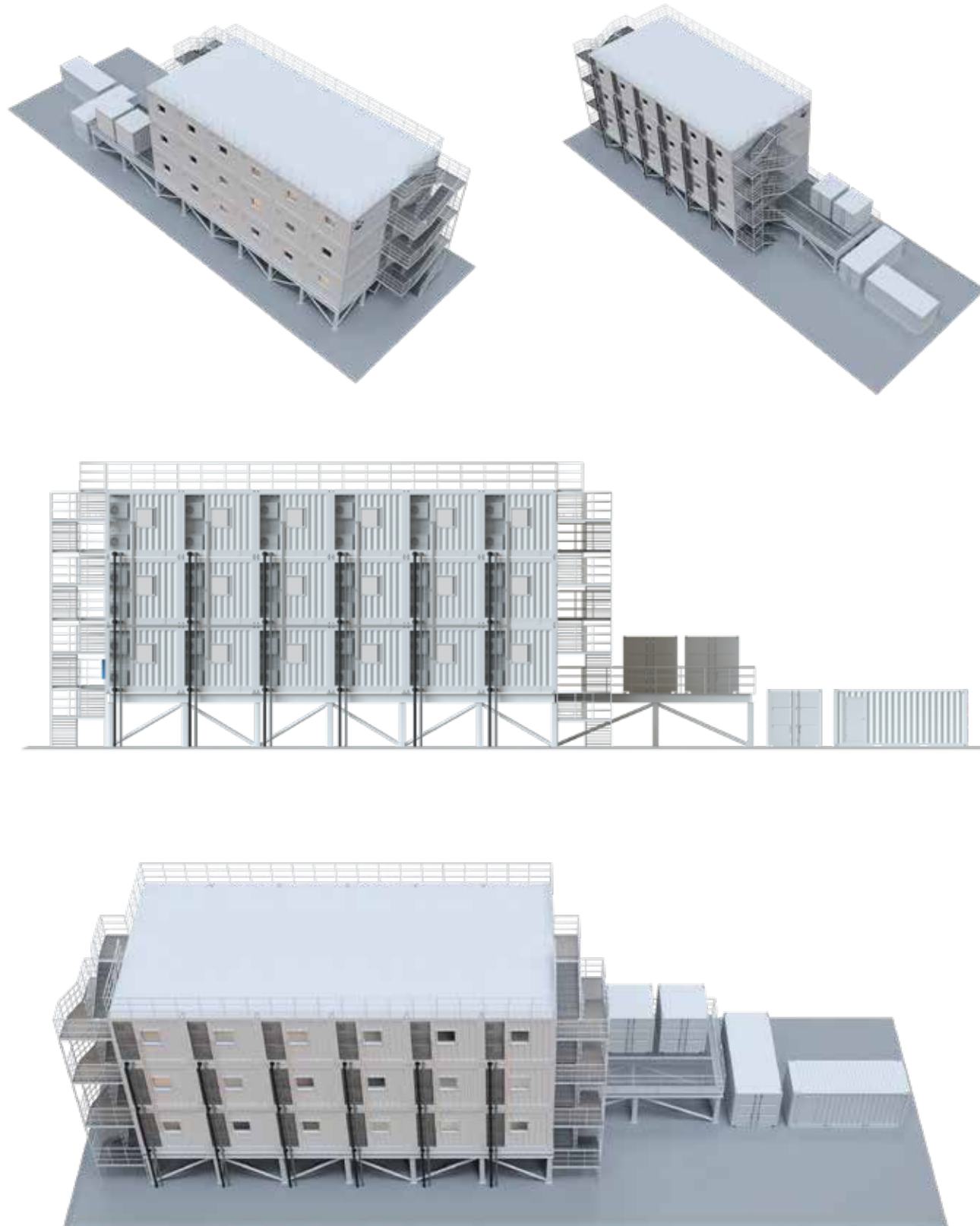
DESCRIPTION



DESCRIPTION

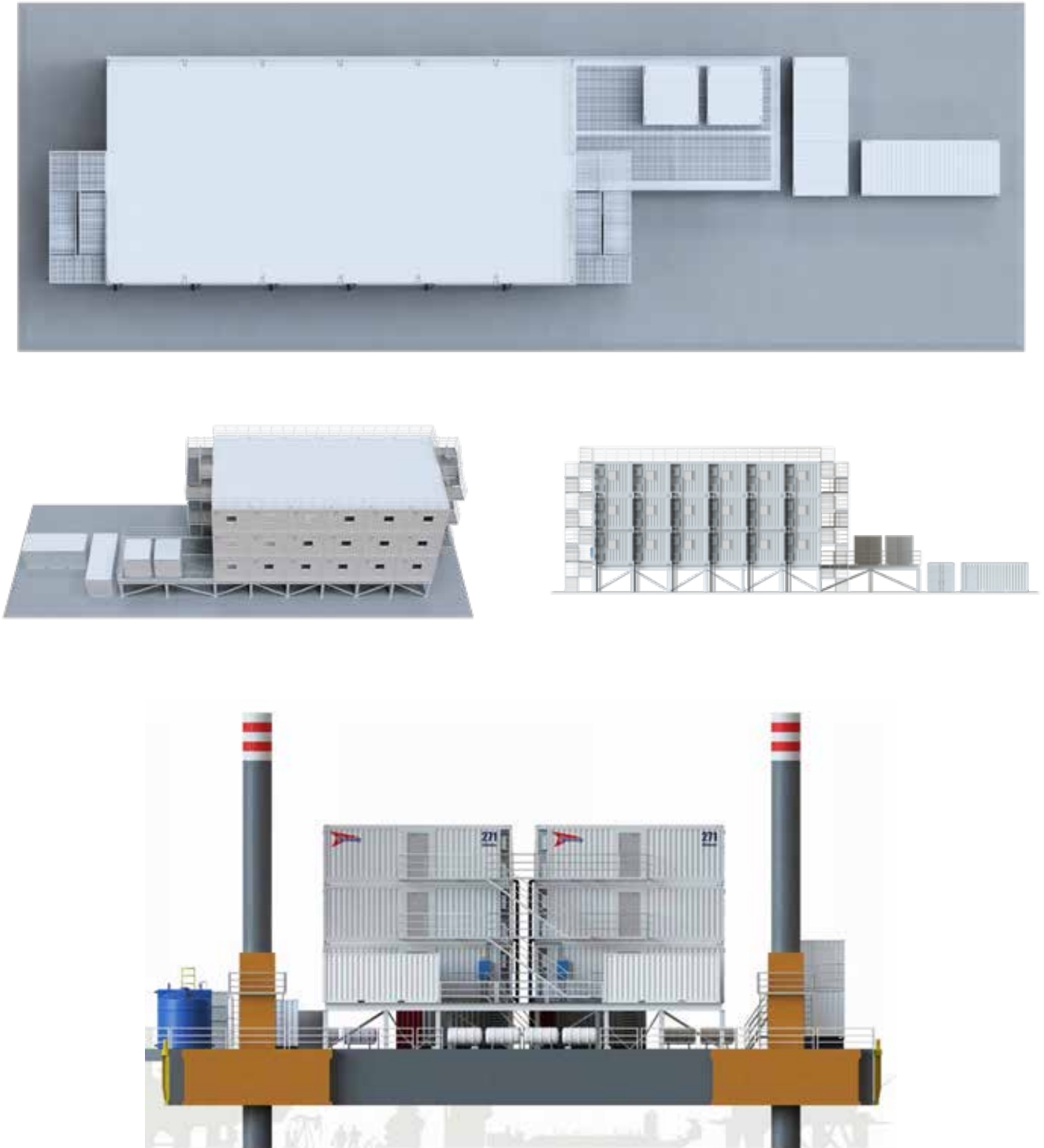
A60 ACCOMMODATION LIVING QUARTER BLOCK

Otati nonsequid eaquissit quis quid eum experfe rectum quae nit proreped eum quo qui qui dus eos esentot asperi optat volorio. Nam eribusant aut et aut minusdae demquistet quae repuda volorem abor minihilit et et quis undi atur, sumque cusdant aspis dellore perchic totas parunt fuga. Nem et reptatist



A60 ACCOMMODATION LIVING QUARTER BLOCK

Otati nonsequid eaquissit quis quid eum experfe rectum quae nit proreped eum quo qui qui dus eos esentot asperi optat volorio. Nam eribusant aut et aut minusdae demquistet quae repuda volorem abor minihilit et et quis undi atur, sumque cusdant aspis dellore perchic totas parunt fuga. Nem et reptatist



SALES@271-CONTAINERS.COM

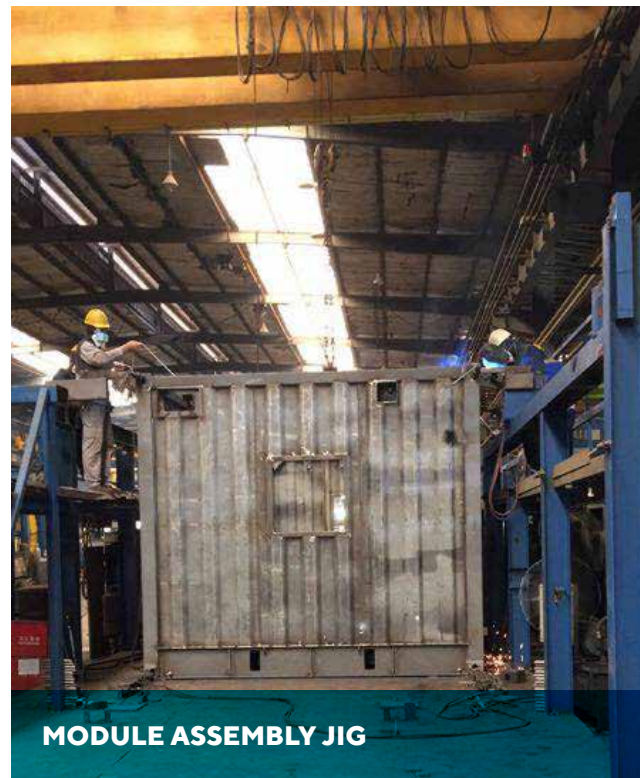
QA / QC AT 271

All A60 modules, built at both 271 Containers are inspected and tested by DNV or ABS at all stages of production.

A60 modules must pass stringent tests before a final certificate is issued and the modules can be released to the client.

Each and every A60 module is issued with a comprehensive documentation, testing and report pack.

Clients are welcome to come and inspect the units at any stage of the construction process and during the final inspection by DNV or ABS.



ACCOMMODATION MODULES LINKABLE TYPE

271 Containers provide a range of accommodation modules. Our standard module is our 9.8m (32ft). This unit can be adapted to accommodate 2, 4 or 8 men depending on the cabin layouts and number of bunks required per cabin.

Modules can be delivered to suit customer's specifications, and provided with a choice of either A60 windows or A60 hatches depending on requirements.

A60 Accommodation modules come with wetrooms (shower and toilet facilities) in each cabin. All modules come fully equipped and ready to 'plug-in & play' to the on board services. Modules are designed to interface with the vessel or platform's control room.

STANDARD FEATURES INCLUDE:

- HVAC SYSTEM
- FIRE AND GAS DETECTION SYSTEM
- SPRINKLER SYSTEM
- EMERGENCY LIGHTING
- FULL AUTOMATIC SHUTDOWN
- FIRE DAMPERS
- PA/TV/TEL SOCKETS AND CONNECTIONS



RECREATION & HELI-LOUNGES, LOCKER AND LAUNDRY

271 modules have been supplied to cater for various uses across the globe. Fitted to the highest standard and designed to provide the most effective use of space our modules have been used as gyms, tv rooms, laundry units, locker rooms, toilet blocks. There are very few limitations to the uses of 271 modules.

Our smaller units can also be modified as offices, gymnasiums and recreation rooms where deck space is limited or the number of people using them is low.



RECREATION A60 MODULE



LOCKER & TOILET A60 MODULE



LAUNDRY A60 MODULE

LAUNDRY UNITS, LOCKER ROOMS, SMOKERS CABINS, PRAYER ROOMS & GYM MODULES

Modules are built using our standard range of 32ft (9.8m) or 40ft (12m) units and can be used independently or designed to link into other modules in the 271 range.

All contents and fittings are sourced to suit the customer requirements, be it individual offices, open working spaces or boardrooms all requirements can be catered to.



RECREATION TV & GAMES ROOM INTERIOR



LOCKER & TOILET A60 MODULE



LAUNDRY A60 MODULE

40FT A60 ACCOMMODATION MODULES

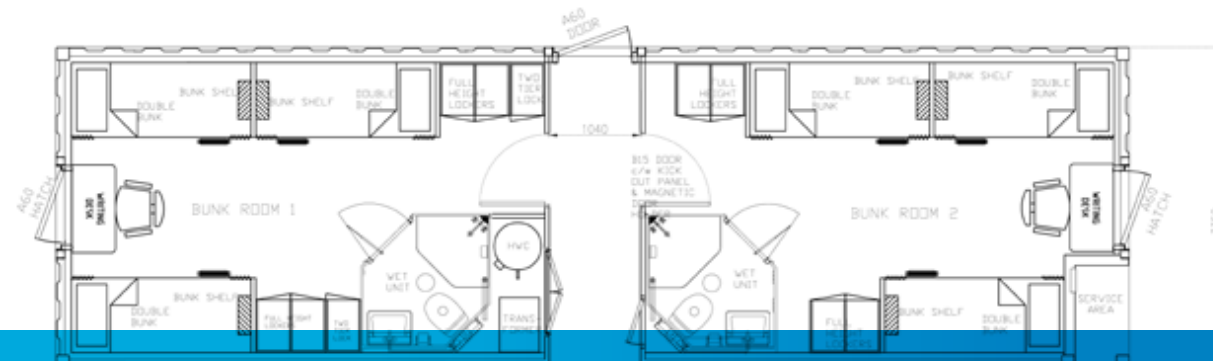
Our 40ft units offer clients a much larger living area within a single unit. Modules can be 8ft, 10ft or 12ft wide, depending on the deck space available and customers particular requirements. We have 4, 8 & 12 bunk versions and as with our 32ft units are linkable and internal layouts can be adapted to suit all uses and applications.

A60 accommodation modules come with wetrooms (shower and toilet facilities) in each cabin.

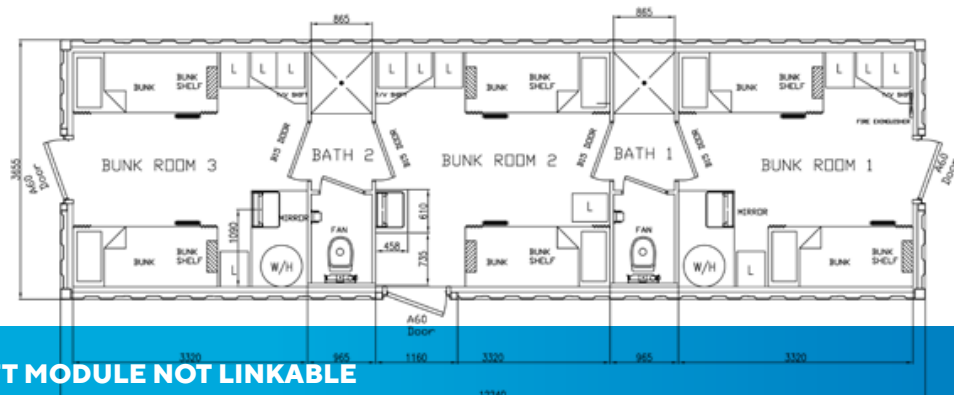
Modules are supplied to meet all clients' specific accommodation needs, with layouts adapted to suit the client's requirements for their employees.



LINKABLE ACCOMODATION MODULE



12 MAN 40FT LINKABLE ACCOMMDATION MODULE



12 MAN 40FT MODULE NOT LINKABLE

40FT A60 ACCOMMODATION MODULES

Our modules can be utilised as either stand-alone units or can be linked and stacked together to form multi- purpose, multi-level accommodation complexes.

Linking kits are supplied with each module – these kits maintain the A60 integrity and seals around the door frames provide a water tight barrier to the harsh offshore environment. The modules are designed to link together quickly and effectively, minimising hook up time and therefore costs, providing clients with a cost effective solution when additional beds and living areas need to be found at short notice.

Please contact our sales teams for additional information and how 271 can help you find a solution to your accommodation needs.



INTERIOR OF ACCOMMODATION MODULE

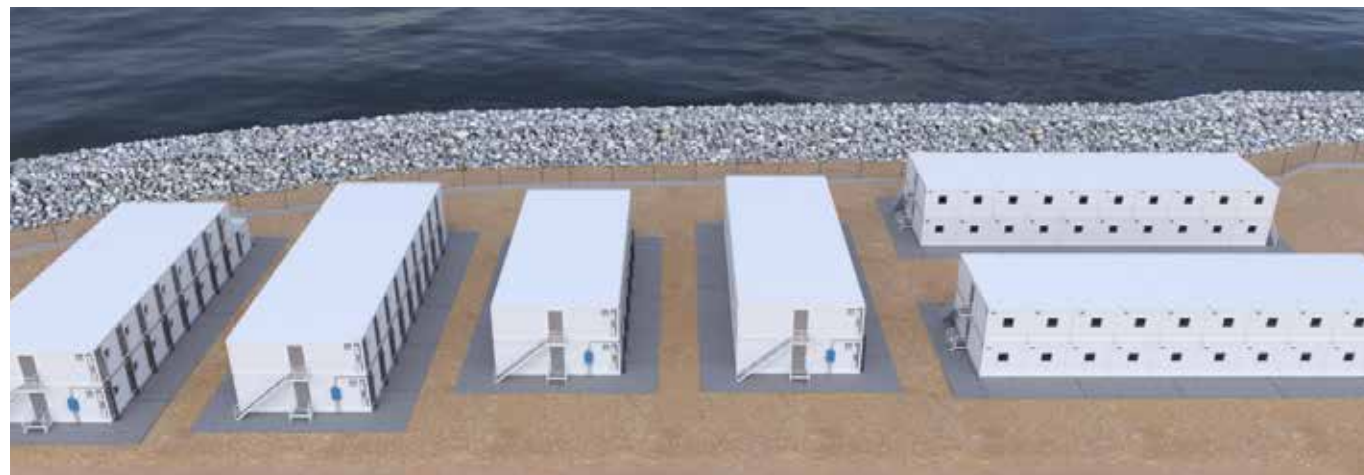


271 CONTAINERS PRODUCTION LINE

271 LAND CAMP BUILDINGS

271 has huge experience in producing land camp buildings for different areas around the world. 271 has recently made a large capital investment to fabricate various types of land camp modules for rental, since land camps are in place for relatively short periods of time this saves the client from investing large sums of money at the front end of a project. 271 land camp buildings have been designed with the harshest of conditions in mind including desert, sea, earthquake as well as colder arctic climates. Since these modules are generally standard shipping sizes, they can be delivered to any major port in the world at a low cost and are easily lifted into position and hooked up in a very short space of time. This allows clients to house personnel and get on with the real job in hand.

MANPOWER LEVELS TO BE INCREASED FROM ITS PRESENT LEVEL OF 150 TO OVER 350
6 ASSEMBLY LINES FOR LAND CAMP BUILDINGS AT THE INITIAL STAGE.
CAPACITY WILL INCREASE TO 36 COMPLETED LAND CAMP BUILDINGS PER WEEK AT PEAK PRODUCTION
12 DEDICATED ASSEMBLY LINES FOR LAND CAMP BUILDINGS.
2 DEDICATED ASSEMBLY LINES FOR OUR OFFSHORE MODULE RANGE
(TO BE USED AS A RELIEF / ADDITIONAL FABRICATION BAYS AS AND WHEN NECESSARY.)



LAND CAMP MEETING OFFSHORE STANDARDS



TYPICAL MIDDLE EAST LAND CAMP 400 POB

OVER 25 YEARS EXPERIENCE IN THE OFFSHORE INDUSTRY
EUROPEAN / WESTERN MANUFACTURING PRACTISES. ENGLISH SPEAKING
SENIOR MANAGEMENT, ENGLISH SPEAKING QA/QC MANAGERS.
ALL WORK IN HOUSE:
DESIGN • ENGINEERING • INSTALLATION • COMMISSIONING
TOTAL ACCOMMODATION SOLUTIONS FOR BOTH THE
OFFSHORE AND ONSHORE INDUSTRIES



SIDE VIEW LAND CAMP



OVERVIEW OF LINKABLE LAND CAMP



LAND CAMP BLOCK



INSTALLATION IN 7 DAYS



1ST LEVEL 3 DAYS



TWIST LOCKS KEEP BUILDINGS IN PLACE



BLOCK COMPLETED



BLOCK SERVICE AREA



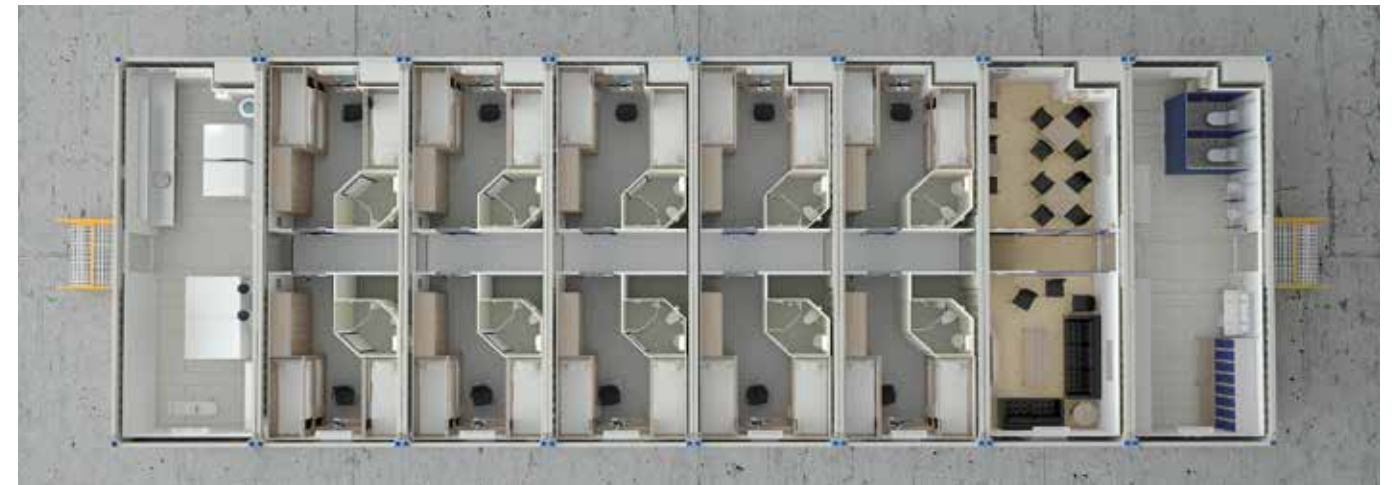
COMPLETED BLOCK 7 DAYS



SIDE VIEW OF STAIRS AND POWER DISTRIBUTION UNIT



VIEW OF SERVICE AREA CONDENSATORS & PIPEWORK



GA OF 1ST LEVEL ACCOMMODATION, LAUNDRY, BREAK AREA AND LOCKER ROOM

GALLEY MODULES

The galley modules are built using our standard range of units and are designed to link into other modules in the 271 range: recreation rooms; sleepers; offices; locker rooms; providing a much larger accommodation complex, where staff / workers can move freely from one unit to the next without having to leave the safety of the modules.

The galley modules are A60 rated and are built to meet DNV or ABS certification, depending on the classification of the vessel or platform. We use recognized European or UK manufacturing brands to supply galley equipment.

Our project managers can assist and advise on the design and layout of the galley, which will be designed around specific client requirements.

All sinks, cupboards and work surfaces are made from stainless steel.

Please contact our sales team for more information on our galley & canteen modules.

GALLEY EQUIPMENT INCLUDES BUT NOT LIMITED TO:

DEEP FAT FRYERS (SOLAS APPROVED)

OVENS & HOT PLATES

COMBI STEAM OVENS

MICROWAVES

FOOD MIXERS

FOOD WASTE DISPOSAL UNITS (MARPOL CERTIFIED)

DISHWASHERS

FRIDGES & FREEZERS

FIRE SUPPRESSION SYSTEMS (FIFI)

CANOPY HOODS



A0/A60 WORKSHOP 12FT, 16FT & 20FT UNITS

271 also design and manufacture a range of smaller modules where deck space is very limited: 10ft, 12ft, 16ft (4.8m) 20ft (6m) and 26ft (7.8m) units. Although these units are not linkable, they allow clients to maximise the limited space available whilst supplying a safe and comfortable living and working environment.

These smaller units can be outfitted to meet almost all requirements: lab units, smokers cabins, sleeper units, offices, control rooms & workshops.

Units can be built for installation in both safe area and hazardous areas on board. Accommodation modules come with wetrooms (shower and toilet facilities) in each cabin.

STANDARD FEATURES INCLUDE:

HVAC SYSTEM

FIRE AND GAS DETECTION SYSTEM

SPRINKLER SYSTEM

EMERGENCY LIGHTING

FULL AUTOMATIC SHUTDOWN (CPFG PANELS – OPTIONAL)

FIRE DAMPERS

PA/TV/TEL SOCKETS AND CONNECTIONS

Please contact our sales teams for additional information and how 271 can help you find a solution to your accommodation needs.



H60 DNV 2.7-1 (ABS) MODULES

H60 MODULES

Fires on offshore installations are categorised as being either hydrocarbon or cellulosic. Cellulosic fire conditions are typified by burning timber and upholstery (as may be found within accommodation areas). Hydrocarbon fire conditions are typified by burning oils and fuels (outside accommodation areas combustible materials will be predominantly hydrocarbons). Hydrocarbons burn far more fiercely than cellulosic materials and consequently require associated fire protection systems to be of substantially superior performance.

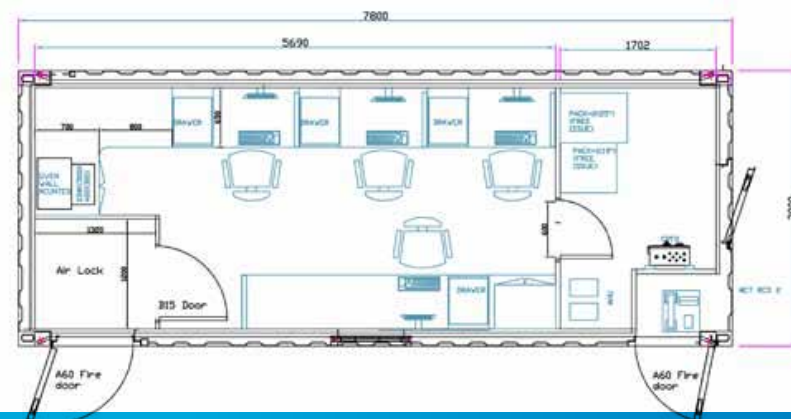
271 is able to offer our customers a range of H60 rated modules, these modules provide the full fire protection required within these hazardous environments without compromising the space or design of standard modules.

Accommodation units; engineering cabins; in fact any module within our product range can be designed and built with an H60 fire rating.

These units can be either DNV 2.7-1 certified or ABS certified depending on the vessel or platform classification.



INSTALLATION IN 7 DAYS



INSTALLATION IN 7 DAYS

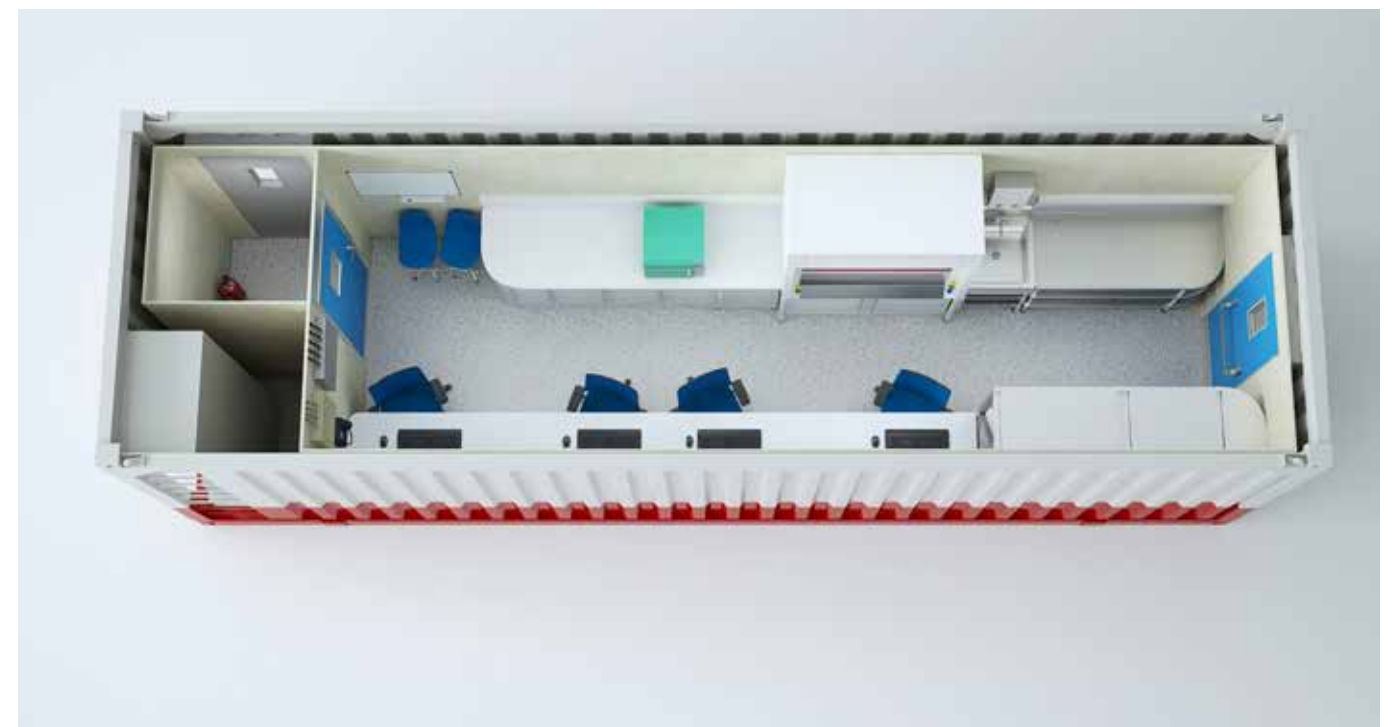
A60 DNV 2.7-1 ZONE 1 & 2 ENGINEERING CABINS

271 modules are designed and built for operation in hazardous (Zone I or Zone II) or Safe Area installations and come in a range of sizes depending on the requirements of the customer and the available footprint on deck.

- A60 DNV 2.7-1, 2.7-2 CERTIFIED UNITS. BS EN 12079**
- A60 ZONE I / ZONE II RATED**
- APPROVED BY LLOYDS, DNV OR ABS**
- HVAC SYSTEM, ZONE I COMPLIANT**
- CPFG (COMBINED PRESSURISATION FIRE AND GAS) PANEL, ZONE I COMPLIANT**
- EEX LIGHTING**
- GAS DETECTORS**
- EMERGENCY LIGHTING**
- EEX TELEPHONE (OPTIONAL)**
- AIR LOCKS**
- FUME CUPBOARD (EEX CERTIFICATION - OPTIONAL)**
- NORSOK REGULATIONS (OPTIONAL)**
- ISO CORNER CASING FOR EASY STACKING AND INTERLOCKING.**
- FLEXIBLE INTERNAL LAYOUTS.**



A full set of DNV certified slings and shackles are supplied with each module. Standard sizes: 12ft, 16ft, 20ft, 24ft, 32ft, 40ft unit sizes are available.



A60 DNV 2.7-1 ZONE 1 LABORATORY MODULE

The layout drawings shown are an example of a standard 20ft x 8ft laboratory module, complete with fume cupboard. As with all 271 units, this layout can be modified to suit. Our lab modules come in a range of sizes and with wider units available offering a larger and more comfortable working environment.



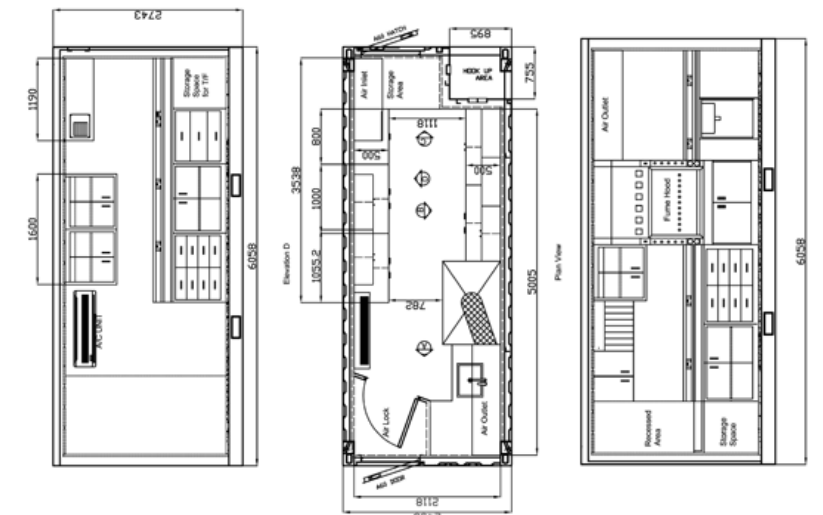
WORKSHOP MODULE

A60 DNV 2.7-1 ZONE 1 MUD LOGGING UNIT

- A60 DNV 2.7-1, 2.7-2 CERTIFIED UNITS. BS EN 12079**
- A60 ZONE I / ZONE II RATED**
- APPROVED BY LLOYDS, DNV OR ABS**
- HVAC SYSTEM, ZONE I COMPLIANT**
- CPFG (COMBINED PRESSURISATION FIRE AND GAS) PANEL, ZONE I COMPLIANT**
- EEX LIGHTING**
- GAS DETECTORS**
- EMERGENCY LIGHTING**
- EEX TELEPHONE (OPTIONAL)**
- AIR LOCKS**
- FUME CUPBOARD (EEX CERTIFICATION - OPTIONAL)**
- NORSOK REGULATIONS (OPTIONAL)**
- ISO CORNER CASING FOR EASY STACKING AND INTERLOCKING.**
- FLEXIBLE INTERNAL LAYOUTS.**



**LABORATORY INTERIOR
WITH FUME CUPBOARD**



ROV CONTROL CABINS & WORKSHOPS

Our ROV cabins can be adapted for installation in both hazardous areas and safe areas on board.

The control cabins and workshops can be sold separately or as a spread package.

Standard features include:

- HVAC SYSTEM (ZONE I COMPLIANT OPTIONAL)**
- FIRE AND GAS DETECTION SYSTEM**
- HV / LV TRANSFORMERS**
- EMERGENCY LIGHTING**
- FULL AUTOMATIC SHUTDOWN (CPFG PANELS – OPTIONAL)**
- FIRE DAMPERS**
- PA/TV/TEL SOCKETS AND CONNECTIONS**
- ERGONOMICALLY DESIGNED ROV PILOT CONTROLS / PILOT CHAIR**
- EEX LIGHTING (OPTIONAL)**
- STANDARD 20FT X 8FT ISO SIZED CONTAINER**
- CSC CERTIFIED (CAN BE SHIPPED AROUND THE WORLD AT STANDARD SHIPPING CONTAINER RATES)**



DNV 2.7-1 WORKSHOPS & BESPOKE MODULES

WORKSHOP AND PAINT STORE CONTAINERS

Using our extensive range of module sizes, modules can be adapted as offshore workshops and containers.

Containers come in all sizes: 40ft, 32ft, 30ft, 26ft, 20ft, 12ft with internal layouts designed to meet clients' specific requirements. Units can be modified for installation in hazardous areas on board: EEx ventilation systems, EEx lighting & EEx control panels

PURPOSE-BUILT UNITS

271 specialise in designing bespoke modules that are build according to the requirements of the client. Any size and shape is possible (up to a max. of 25 tonnes (DNV))



A60 DNV 2.7-1 (ABS) ACCOMMODATION BLOCK

For larger offshore projects there is often the need to create accommodation blocks to be used on barges. Using our 32ft module design, various module types can be linked together to create an accommodation block to meet specific client requirements. Depending on the deck space available and the number of bunks required per cabin, 271 and its skilled designers are able to create an accommodation block, which provides the optimum solution for the clients needs.

Linking kits are provided which maintain the A60 integrity of the whole accommodation block. Seals are supplied and fitted and these seals provide a water-tight barrier against the elements and harsh environments experienced offshore.

271 is able to send an experienced team of engineers anywhere in the world to oversee the installation, hook-up and commissioning of the modules on board the barge / vessel.

The Module block is a proven cost effective way of increasing or indeed installing a complete new accommodation block on board a barge / vessel.



The general arrangement drawings shown are just one example of how the block would look, but the layouts can easily be configured to meet all of our customers requirements.

Please contact our sales team for more information on how 271 can assist your company with the accommodation solution best suited to you needs.



271 CASE STUDY

SAFE CONCORDIA PROJECT

72 POB INSTALLATION PROJECT

Key Project Dates:

Contract Award date:	1st October
Module Completion date: (Ex Works, 271 Suzhou)	30th November
Shipping times to Curacao:	5 weeks
Modules arriving in Curacao (Dutch Antilles):	21st January
Installation:	3 weeks (271 Installation Team)
Vessel departure date:	21st February



LINKABLE ACCOMMODATION BEING INSTALLED

271 has a range of experienced engineers, whom are available to travel around the world to undertake surveys and supervise module installation, testing and commissioning at a moments notice. Depending on the size of the project, this can take anything from a few days to several weeks.



LINKABLE ACCOMMODATION BEING INSTALLED



GRILLAGE FOR MODULES



QUICK INSTALLATION



72 POB BLOCK



LIFTING ONTO RIG

RENTAL & STOCK MODULES

Please contact our various sales teams for more information and current stock levels at each location.



SHIPPING & LOGISTICS

271 have many years experience in shipping modules & containers of various sizes from the Far East to almost every major oil and gas producing region of the world: Gulf of Mexico; North Sea; Brazil; Australia; Middle East; South East Asia; West Africa; the Mediterranean; Caspian region and many others. We have built up an excellent network of shipping agents and we can take care of all clients' shipping requirements - door to door.

INSTALLATION

271 has experienced installation and project engineers that can be sent to any part of the world to oversee the hook-up and commissioning of the module or modules on board.

No special tools required, all tools and linking kits are sent out with the module(s) when they leave 271 facilities. Client's own labour is used as much as possible to help minimise costs.

Whether your requirements are for 4 or 40 additional bunks, installation of specialist modules in shipyards or on FPSOs off the west coast of Africa, 271 have the know-how and expertise to ensure a smooth delivery, installation and hook-up of our world class modules.

All projects completed on time and to budget with zero lost time incidents.



CONTAINER RENTAL

All units are blasted and painted to SA 2.5 with a 3 coat paint system.
271 uses recognised GLOBAL BRANDS: JOTUN, HEMPEL, INTERNATIONAL PAINTS, depending on clients' own specific needs.
Option: Units can be hot dipped galvanised.

10FT DNV 2.7-1 CONTAINER

DIMS: 10ft x 8ft x 8.6ft | (3000mm x 2438 x 2591 mm)
TARE WEIGHT: 2,365 KGS
PAYLOAD: 7,750 KGS
MGW: 10,115 KGS
CSC I ISO Plated

Open top designs also available (Tarpaulins Supplied)
Additional shelving can be added

Individual container dimensions and weights may differ. Designed, fabricated, tested and marked in accordance with DNV 2.7-1, BS EN 12079



10FT HALF HEIGHT DNV 2.7-1 CONTAINER

DIMS: 10ft x 8ft x 4.2ft | (3000mm x 2430mm x 1280mm)
TARE WEIGHT: 2,100 KGS
PAYLOAD: 7,860 KGS
MGW: 9,960 KGS
CSC I ISO Plated

Individual container dimensions and weights may differ. Designed, fabricated, tested and marked in accordance with DNV 2.7-1, BS EN 12079 (Tarpaulins Supplied)



20FT DNV 2.7-1 / LLOYD'S CERTIFIED CONTAINER

DIMS: 20ft x 8ft x 8.6ft / (6096mm x 2438mm x 2591 mm)
TARE WEIGHT: 4,500 KGS
PAYLOAD: 15,500 KGS
MGW: 20,000 KGS
CSC I ISO Plated

Open Top designs also available
Individual container dimensions and weights may differ. Designed, fabricated, tested and marked in accordance with DNV 2.7-1, BS EN 12079 (Tarpaulins Supplied)



20FT DNV 2.7-1 HALF HEIGHT CONTAINER

DIMS: 20ft x 8ft x 4.2ft / (6096mm x 2438mm x 1280mm)
TARE WEIGHT: 2,380 KG
PAYLOAD: 10,000 KG
MGW: 12,380 KG

Individual container dimensions and weights may differ. Designed, fabricated, tested and marked in accordance with DNV 2.7-1, BS EN 12079



All clients' specific container and basket requirements can be met. 271 Containers specialises in the design and manufacture of bespoke units to meet all our customers' individual container needs.

All slings sourced from UK manufacturers.
Please contact our Sales Team for further information.

6FT MINI CONTAINER DNV 2.7-1 CERTIFIED UNIT

DIMS: 5.7ft x 6.5ft x 8.8ft (1680mm x 1950mm x 2640mm)
TARE: 1,550KGS
PAYLOAD: 4,000 KGS
MGW: 5,500 KGS

FORK LIFT POCKETS: 4 WAY ENTRY

Additional storage shelving can be fitted
Individual container dimensions and weights may differ. Designed, fabricated, tested and marked in accordance with DNV2.7-1, BS EN 12079



DNV 2.7-1 CERTIFIED UNIT 10 TONNE MUD SKIP

DIMS: 2210mm x 1850mm x 1410mm
CUBIC CAPACITY: 4m³
TARE WEIGHT: 1,550 KGS
PAYLOAD: 8,450 KGS
MGW: 10,000KGS

FORK LIFT POCKETS: 4 WAY ENTRY

Lightweight aluminium lid, lower height - all operations can be carried out at ground level.
Individual container dimensions and weights may differ. Designed, fabricated, tested and marked in accordance with DNV2.7-1, BS EN 12079



BASKETS

6ft, 25ft, 35ft, 45ft, 60ft, 70ft & 90ft Baskets
All DNV 2.7-1 Certified

Individual container dimensions and weights may differ. Designed, fabricated, tested and marked in accordance with DNV2.7-1, BS EN 12079



20FT WORKSHOP DNV 2.7-1 CERTIFIED WORKSHOPS

DIMS: 20ft x 8ft x 8.6ft (6058mm x 2438mm x 2591 mm)
Workshops can be modified to suit all clients' individual requirements; Workbenches; Tool Racks; Ex Lightings; HVAC System/Extraction Fans; Personnel Door.
Fire Ratings (optional).

Individual container dimensions and weights may differ. Designed, fabricated, tested and marked in accordance with DNV2.7-1, BS EN 12079



6FT MINI CONTAINER

SPECIFICATION:

EXTERNAL NOMINAL DIMENSIONS: 1.6m x 1.85m x 2.88m

INTERNAL DIMENSIONS: 1.44m x 1.75m x 2.5m

TARE WEIGHT: 3,750 lbs, 1,700 kgs

PAYLOAD - 11,020 lbs, 5,000 kgs

MAX GROSS WEIGHT - 14,770 lbs, 6,700 kgs

FORK LIFT POCKETS: Four way entry

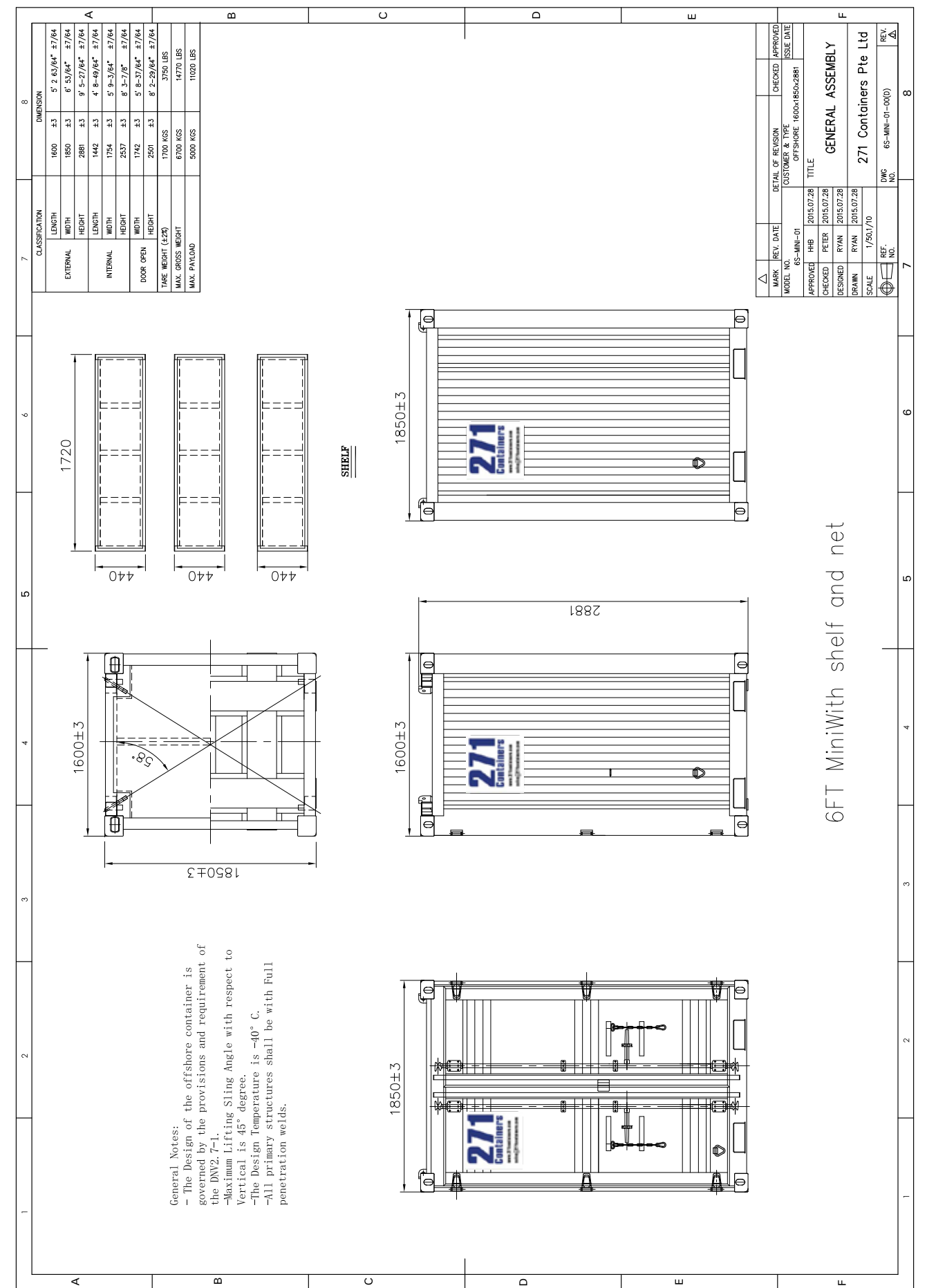
MID-LEVEL CARGO SHELF: Removable, lockable, 4,405 lbs, 2,000 kgs capacity

SLINGS: Supplied with DNV approved slings

CERTIFICATION & DESIGN: DNV 2.7-1, BS EN 12079:2006



SALES@271-CONTAINERS.COM



SALES@271-CONTAINERS.COM

10FT FULL HEIGHT CONTAINER

SPECIFICATION:

EXTERNAL NOMINAL DIMENSIONS: 10' x 8' x 8' 6" (high), 3m x 2.43m x 2.59m (high)

INTERNAL DIMENSIONS: 9' 2" x 7' 4" x 7' 3", 2.80m x 2.24m x 2.24m

CUBIC CAPACITY: 494ft³, 14m³

TARE WEIGHT: 5,210 lbs, 2,365 kgs

PAYLOAD: 17,085 lbs, 7,750 kgs

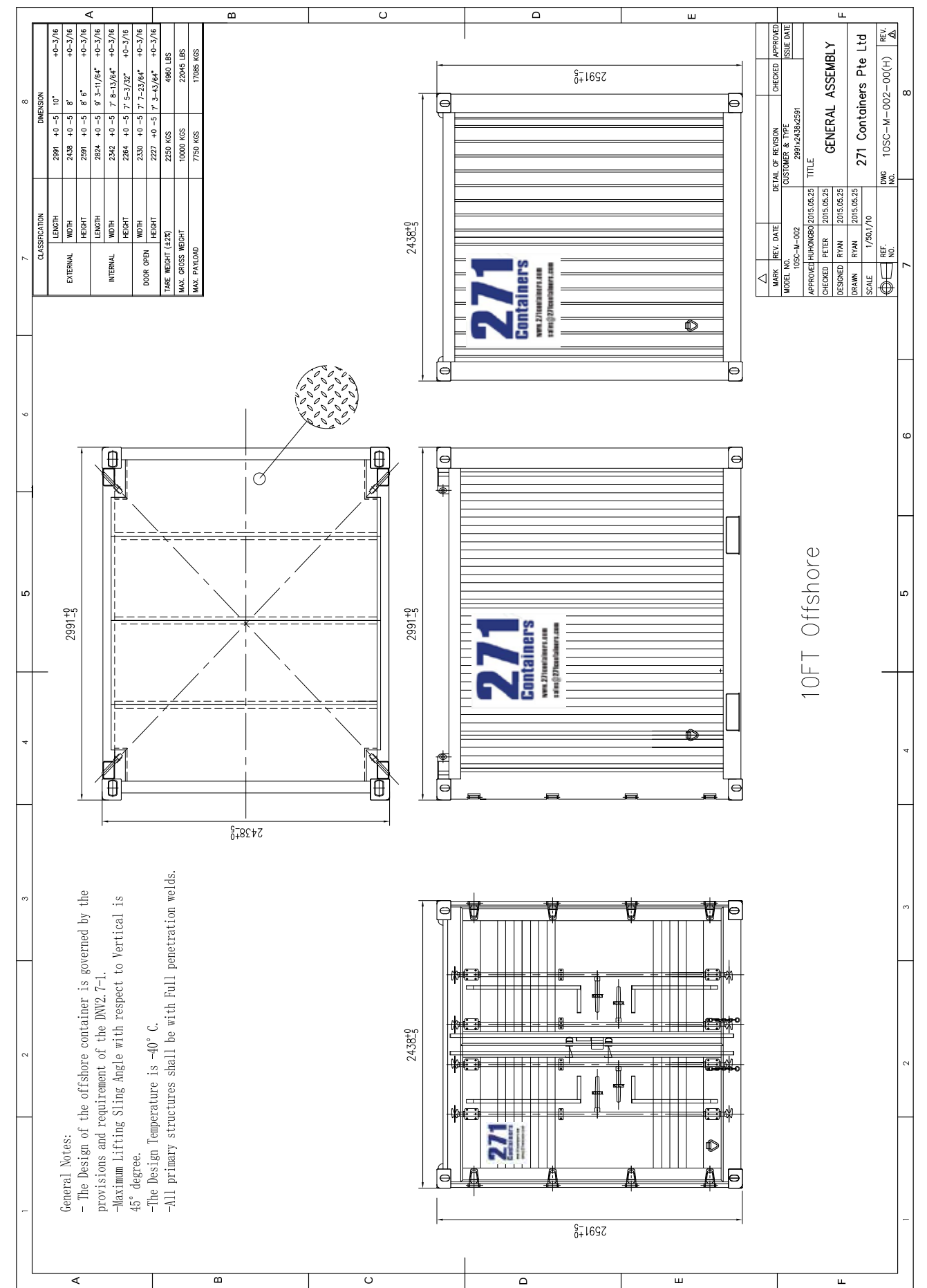
MAX GROSS WEIGHT: 22,300lbs, 10,115 kgs

SLINGS: Supplied with DNV approved slings

CERTIFICATION & DESIGN: DNV 2.7-1, BS EN 12079:2006



SALES@271-CONTAINERS.COM



SALES@271-CONTAINERS.COM

20FT HALF HEIGHT CONTAINER

SPECIFICATION:

EXTERNAL DIMENSIONS: 6058 x 2438 x 1280mm

INTERNAL DIMENSIONS: 5846 x 2154 x 921mm

TARE WEIGHT: 3,500kgs

PAYLOAD: 9,000kgs

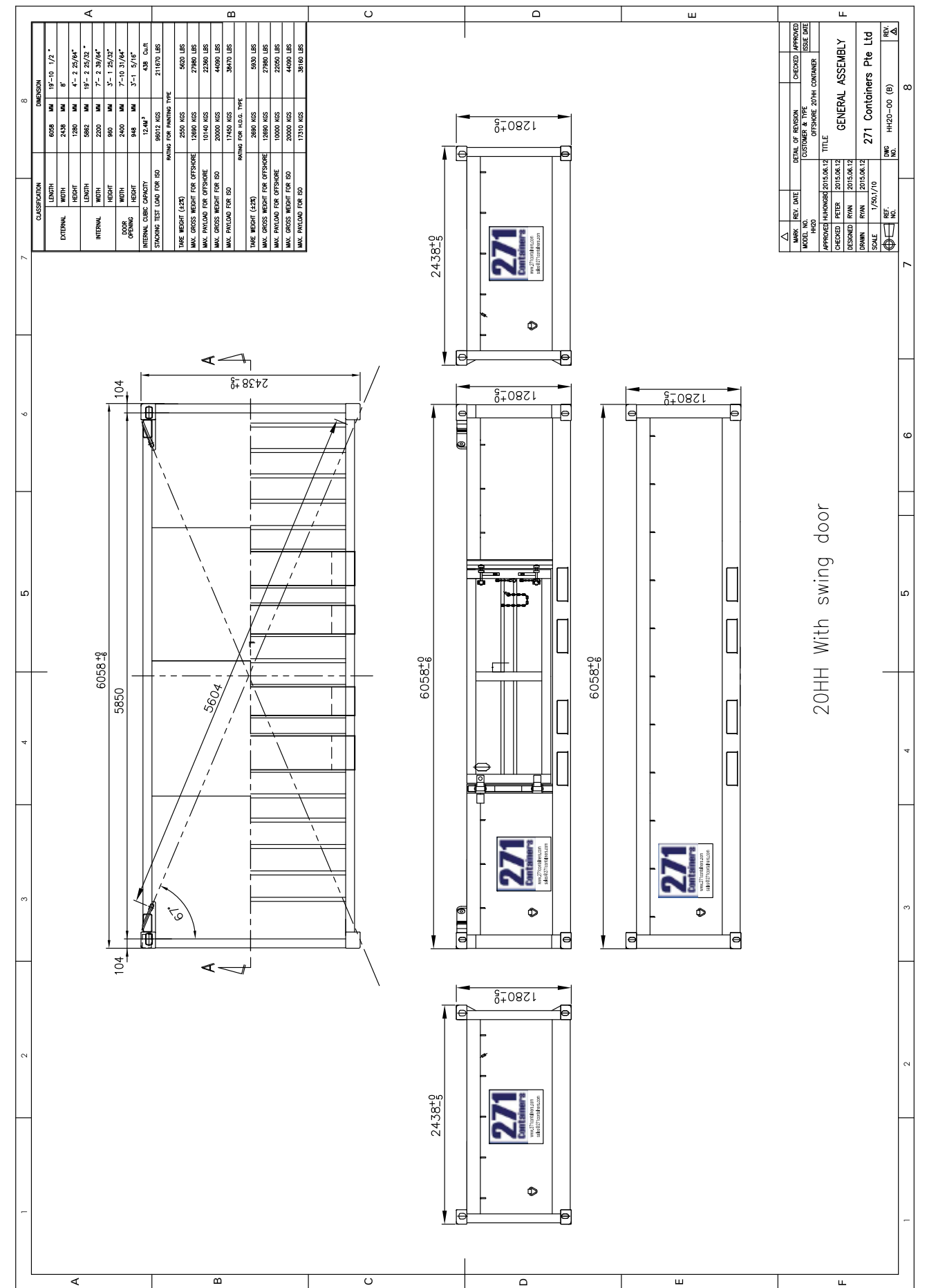
MAX GROSS WEIGHT: 12,500kgs

SLINGS: Supplied with DNV approved slings

CERTIFICATION & DESIGN: DNV 2.7-1, BS EN 12079:2006



SALES@271-CONTAINERS.COM



SALES@271-CONTAINERS.COM

2900LTR OFFSHORE CHEMICAL TANK DNV 2.7-1

SPECIFICATION:

Designed, Manufactured And Fully Certified To Dnv 2.7-1 / En 12079 Standards

T7 / T11 Un Portable Tank Approved Under Imdg / ADR / RID

Discharge 2" Bsp O 2.67 / 4 Bar Working Pressure

Tank Complete With Remote Vent Valve And Level Gauge / Dip Stick

VESSEL MATERIAL: 316 Stainless Steel

Ladder Steps With Anti-Slip Surfaces

Flush Mounted Grating On Roof

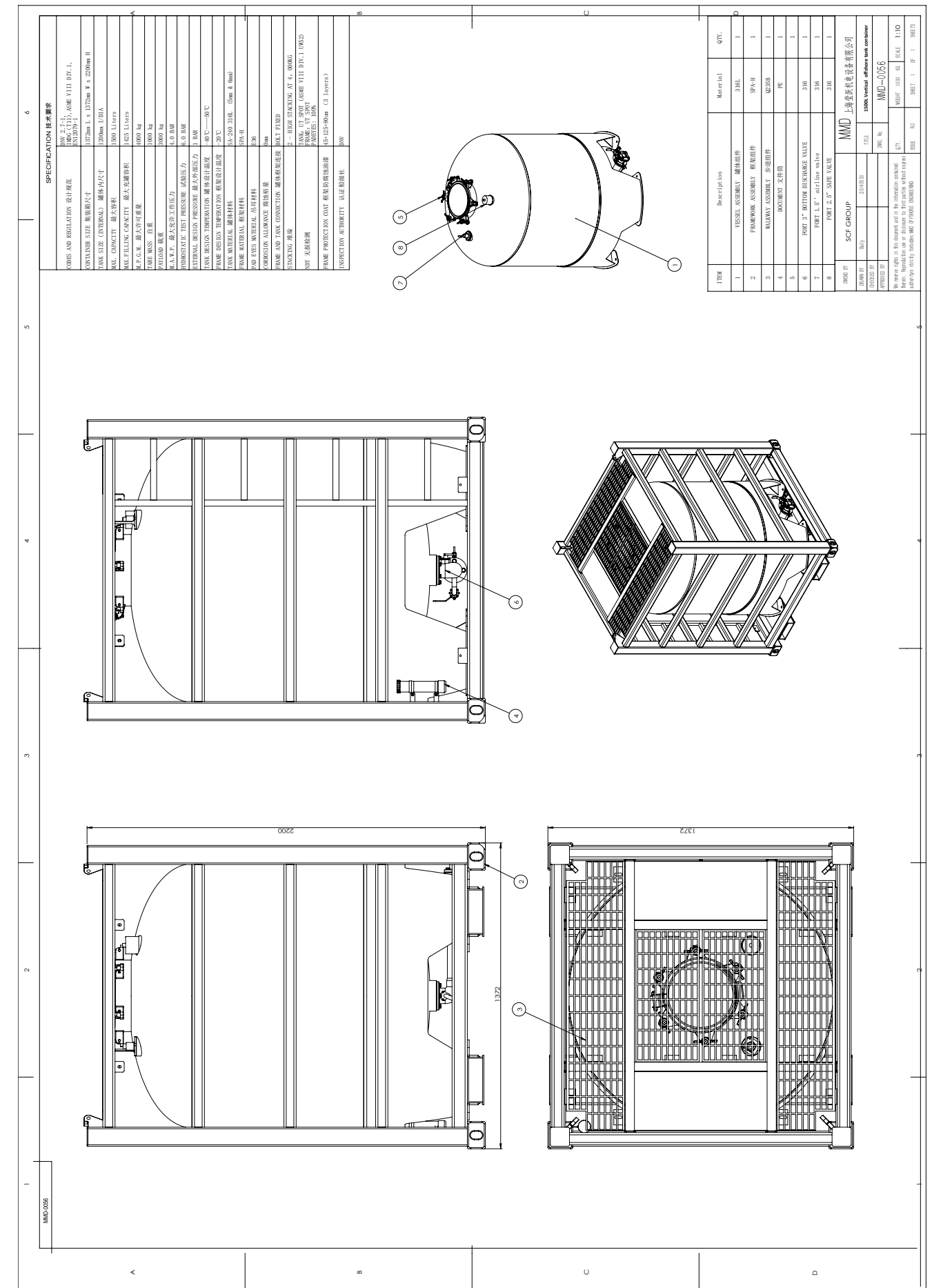
DIMENSIONS A: 1995 X B 1995 X C 2235 Tare 1790 Kgs

PAYLOAD: 4710 Kgs

MGW: 6500 Kgs



SALES@271-CONTAINERS.COM



SALES@271-CONTAINERS.COM

GAS RACK

SPECIFICATION:

EXTERNAL NOMINAL DIMENSIONS: 4'9" x 4'1" x 7' 4" (high) 1.45m x 1.24m x 2.25m high)

INTERNAL DIMENSIONS: 3' 11" x 3' 4" x 6' 6", 1.20m x 1.02m x 1.98m

CUBIC CAPACITY: 85ft³, 2.42m³

TARE WEIGHT: 1,810 lbs, 820 kgs

PAYLOAD: 5,510 lbs, 2,500 kgs

MAX GROSS WEIGHT - 7,320 lbs, 3,320 kgs

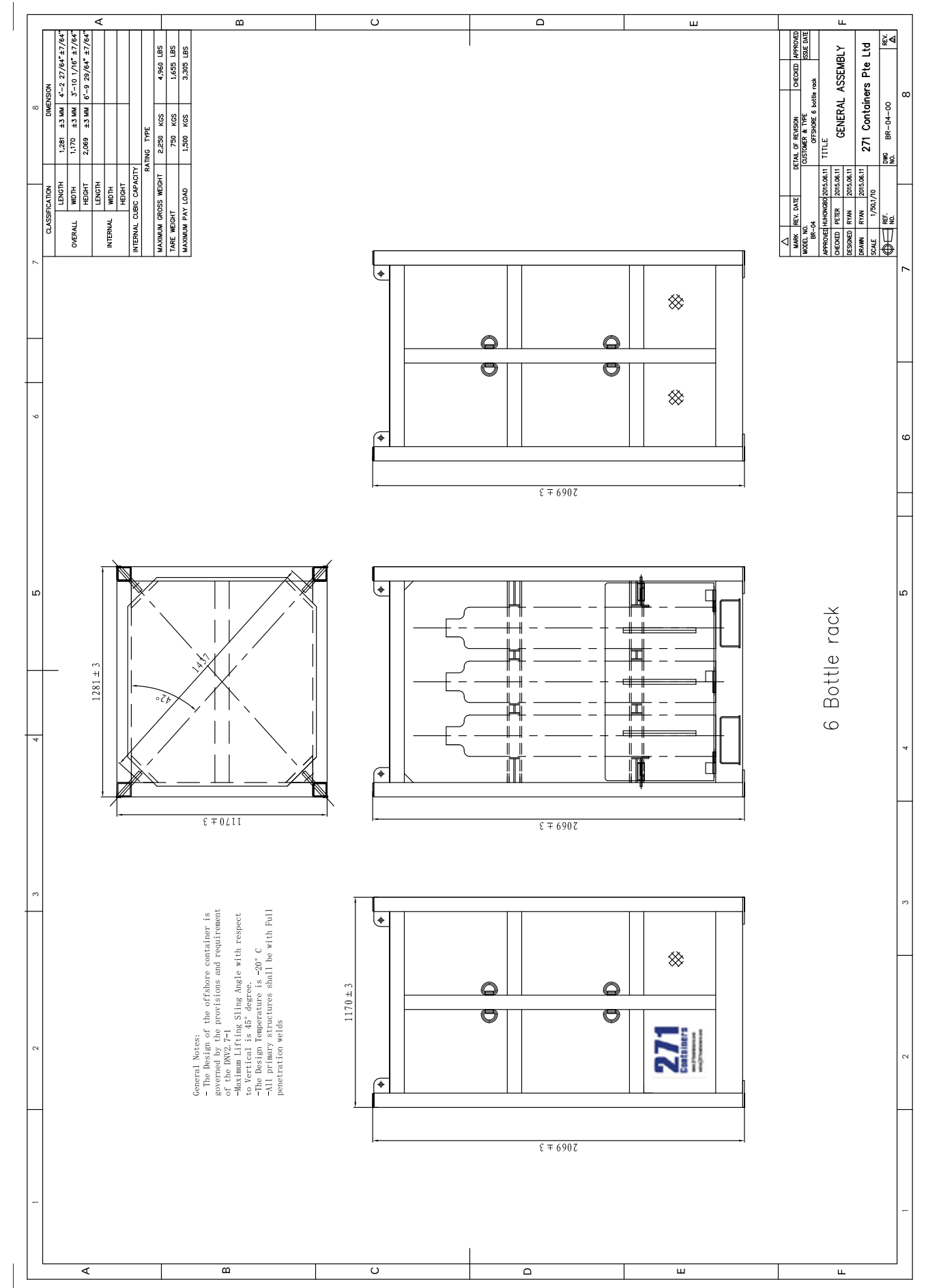
INTERNAL ACCESSORIES - Bottle frames (optional), Cargo straps

SLINGS: Supplied with DNV approved slings

CERTIFICATION & DESIGN: DNV 2.7-1 / BS EN12079:2006



SALES@271-CONTAINERS.COM



SALES@271-CONTAINERS.COM

6 TON MUD SKIP

SPECIFICATION:

EXTERNAL NOMINAL DIMENSIONS: 2.1m x 1.7m x 1.310m

INTERNAL DIMENSIONS: 1.892m x 1.639m x 0.914m

CUBIC CAPACITY: 90.7FT³, 2.57M³

TARE WEIGHT: ,670 kgs

PAYLOAD: 3,900lbs, 1,000 kgs,

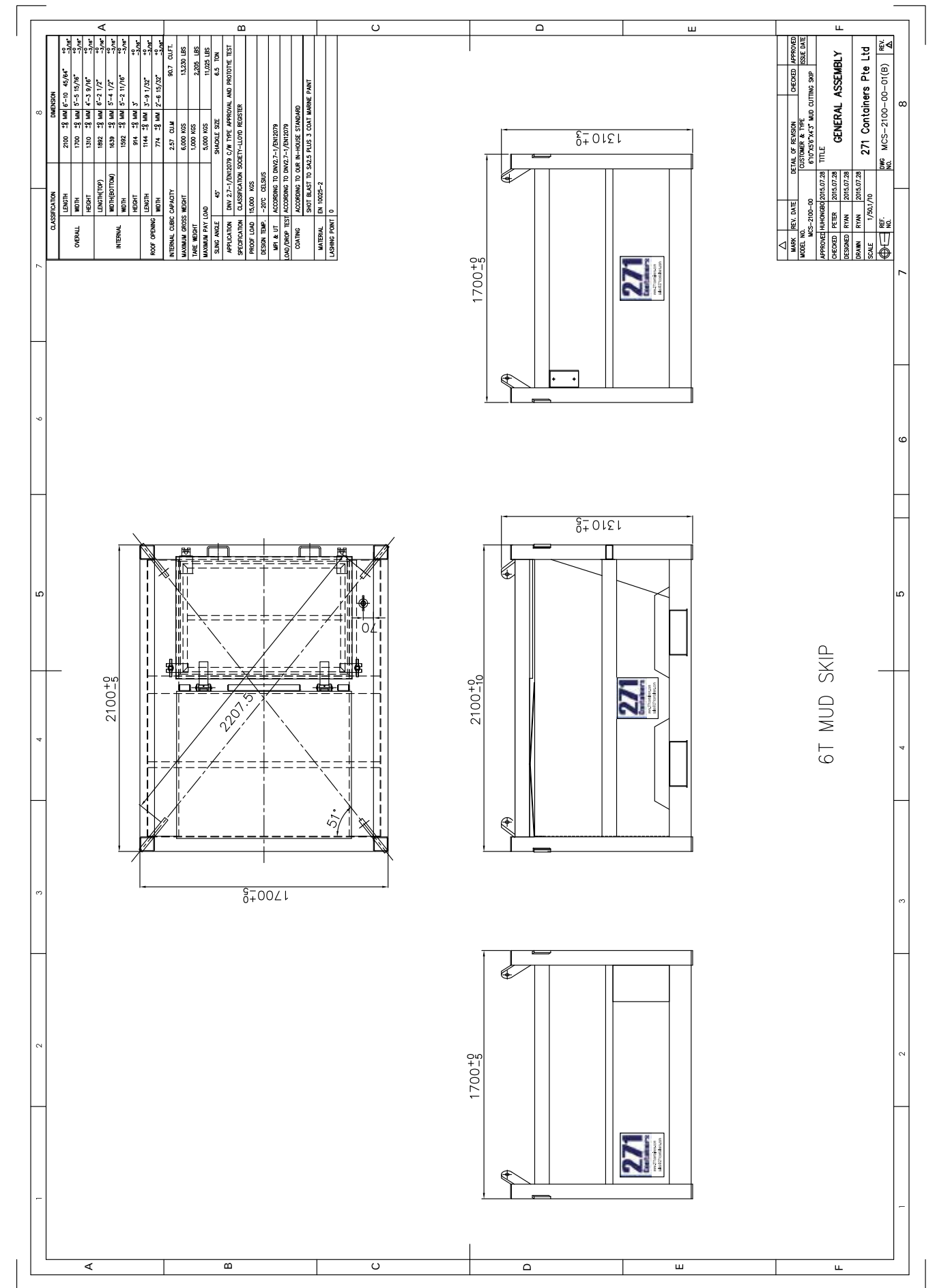
MAX GROSS WEIGHT: 21,630LBS, 6,000 KGS

STACKING: Can be stacked with supplied slings attached

CERTIFICATION & DESIGN: DNV 2.7-1 / BS EN 12079:2006



SALES@271-CONTAINERS.COM



SALES@271-CONTAINERS.COM

10FT WORKSHOP DNV 2.7-1 & A60 RATED

SPECIFICATION:

EXTERNAL DIMENSIONS: L2991mm x W2438mm x H2896

TARE WEIGHT: 2,800Kgs

PAYLOAD: 7,200Kgs

MAX GROSS WEIGHT: 10,000Kgs

Fitted with ATEX and IECEx certificated Junction Box, Distribution Board, Door Light, Emergency Lights, Air-conditioning, Electrical Sockets and Switches and Fire Extinguishers

4-Way Forklift Pockets and 4-Point Lifting Arrangements

Supplied with DNV 2.7-1 Wire Roped Slings

Built to DNV 2.7-1 Wire Roped Slings

SOLAS Compliant

DNV Classified and CSC Plated

Operation Area: ZONE II



WORKSHOP AND PAINT STORE CONTAINERS

Using our extensive range of module sizes, modules can be adapted as offshore workshops and containers.



EXD SHUTDOWN SWITCH



STAINLESS STEEL RACKING SYSTEMS



WORKSHOP WITH 1 TONNE HOIST / PULLEY SYSTEM



Containers come in all sizes: 40ft, 32ft, 30ft, 26ft, 20ft, 12ft with internal layouts designed to meet clients' specific requirements. Units can be modified for installation in hazardous areas on board: EEx ventilation systems, EEx lighting & EEx control panels.

PURPOSE-BUILT UNITS

271 specialise in designing bespoke modules that are built according to the requirements of the client. Any size and shape is possible (up to a max. of 25 tonnes (DNV)).



WORKSHOP H60: 10M X 4.5M X 3.4M



INTERNAL IMAGE OF WORKSHOP WITH CRANE AND MACHINERY



WORKSHOP A0 & A60 MODULES

SALES@271-CONTAINERS.COM



CONTAINERS DMCC

PLEASE CONTACT
SALES@271-CONTAINERS.COM
FOR ENQUIRES OR FURTHER INFORMATION

ABU DHABI UAE MIDDLE EAST

271 Containers DMCC
Tiffany Tower #1303
Jumeriah Lake Towers
Dubai
UAE

SINGAPORE

1 Westgate Drive
#07-01 Suite 51
Westgate Tower
Singapore 608531

NIGERIA

271-Containers West Africa Ltd
C/O Kavod Offshore Ltd Base,
Plot 125 Trans-Amadi Industrial Layout
Port Harcourt,
Nigeria

