



DATA SHEET

6FT MINI CONTAINER

271
Offshore



Specification:

External nominal dimensions - 1.6m x 1.85m x 2.88m

Internal dimensions - 1.44m x 1.75m x 2.5m

Tare weight - 3,750 lbs, 1,700 kgs

Payload – 11,020 lbs, 5,000 kgs

Max gross weight – 14,770 lbs, 6,700 kgs

Fork lift pockets - Four way entry

Mid-level cargo shelf - Removable, lockable, 4,405 lbs, 2,000 kgs capacity

Slings - Supplied with DNV approved slings

Certification & Design - DNV 2.7-1, BS EN 12079:2006

271 Offshore
3606 Jumeirah Bay,
X3 Tower,
X3 Cluster,
JLT,
Dubai

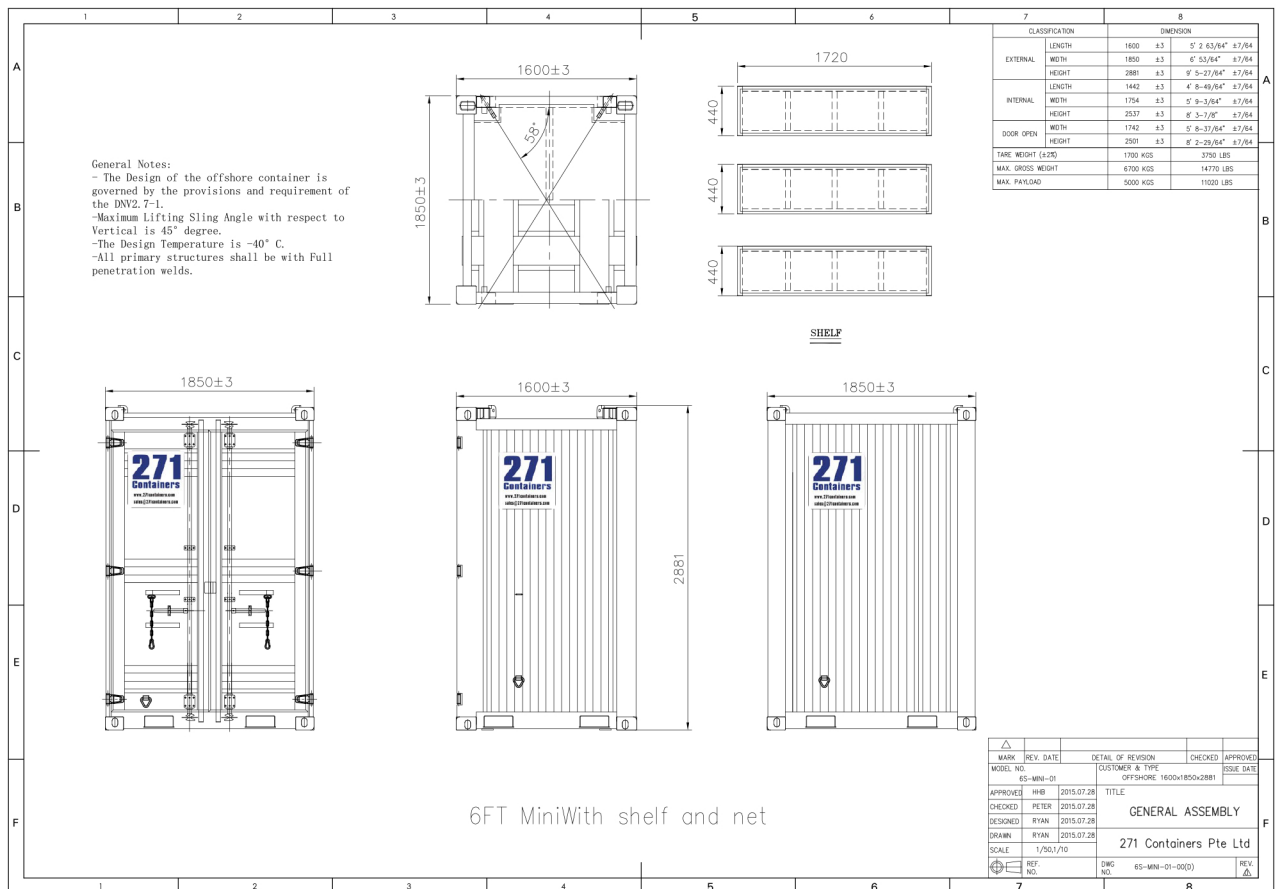
Tel : +971 (0) 4 442 9854
Web: www.271offshore.com
Email: sales@271offshore.com



DATA SHEET

6FT MINI CONTAINER

271
Offshore



271 Offshore
 3606 Jumeirah Bay,
 X3 Tower,
 X3 Cluster,
 JLT,
 Dubai

Tel : +971 (0) 4 442 9854
 Web: www.271offshore.com
 Email: sales@271offshore.com