



DATA SHEET

6 TONNE MUD SKIP

271
Offshore



Specification:

External nominal dimensions - 2.1m x 1.7m x 1.310m

Internal nominal dimensions – 1.892m x 1.639m x 0.914m

Cubic capacity – 90.7ft³, 2.57m³

Tare weight – 3,900lbs, 1,000 kgs,

Payload – 17,640 lbs, 5,000 kgs

Max gross weight – 21,630lbs, 6,000 kgs

Accessories: Tarpaulin (optional)

Stacking - Can be stacked with supplied slings attached

Certification & Design - DNV 2.7-1 / BS EN 12079:2006

	Length (mm)	Length (top) (mm)	Width (mm)	Width (bottom) (mm)	Height (mm)	Tare (kg)	MGW (kg)	Payload (kg)
Overall	2100		1700		1310	1000	6000	5000
Internal		1892	1592	1639	914	1000	6000	5000
Roof Opening	1144		774			1000	6000	5000

271 Offshore
3606 Jumeirah Bay,
X3 Tower,
X3 Cluster,
JLT,
Dubai

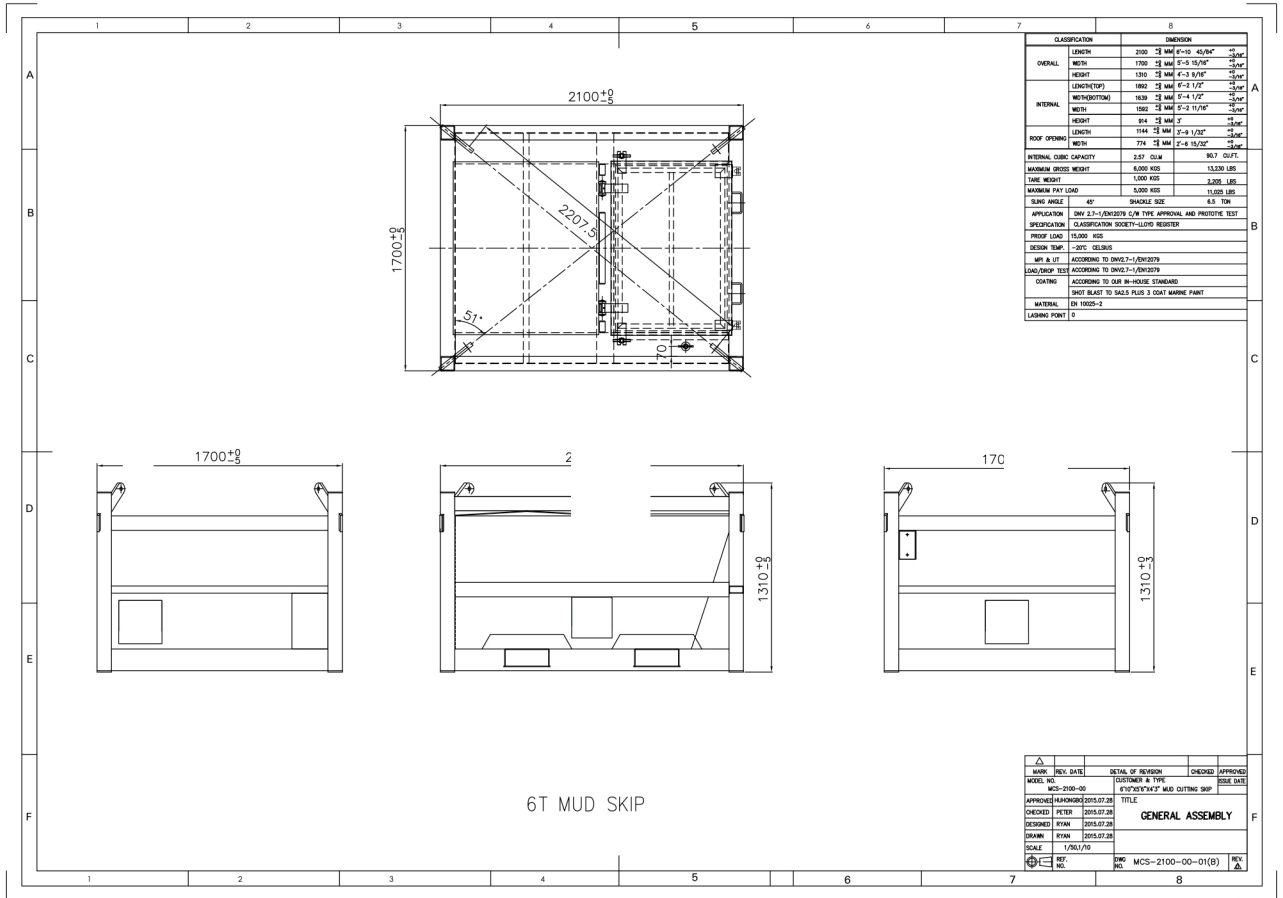
Tel : +971 (0) 4 442 9854
Web: www.271offshore.com
Email: sales@271offshore.com



DATA SHEET

6 TONNE MUD SKIP

271
Offshore



271 Offshore
3606 Jumeirah Bay,
X3 Tower,
X3 Cluster,
JLT,
Dubai

Tel : +971 (0) 4 442 9854
Web: www.271offshore.com
Email: sales@271offshore.com