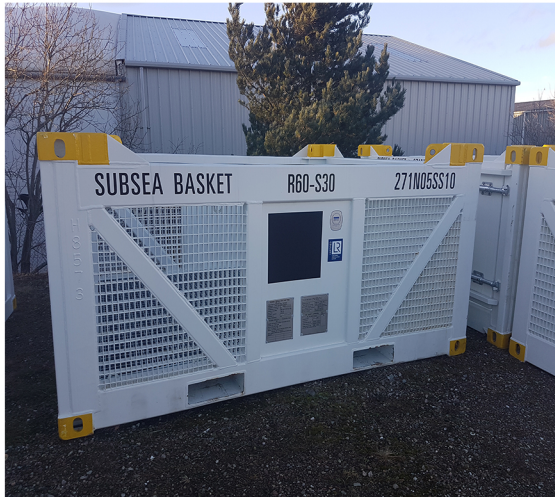




# DATA SHEET

## 20x8FT HALF HEIGHT SUBSEA BASKET

**271**  
Offshore



### Specification:

- Structural Frame Constructed and Certified to DNV 2.7-3 & CSC
- Design Temperature -20°C
- 4 leg sling assembly with Steel Ferrules - Sling Angle 45°
- Stackable due to ISO Corner Castings to Top & Bottom Corners
- Standard ISO Length and Width
- Forklift Pockets
- Galvanised Grating Sides and Floor
- Internal Tie Down Points
- Single Hinged End Access Door

	Length (mm)	Width (mm)	Height (mm)	Tare (kg)	MGW (kg)	Payload (kg)
External	6058	2438	1280	3650	15650	12000
Internal	5846	2054	898			

271 Offshore  
3606 Jumeirah Bay,  
X3 Tower,  
X3 Cluster,  
JLT,  
Dubai

Tel : +971 (0) 4 442 9854  
Web: [www.271offshore.com](http://www.271offshore.com)  
Email: [sales@271offshore.com](mailto:sales@271offshore.com)

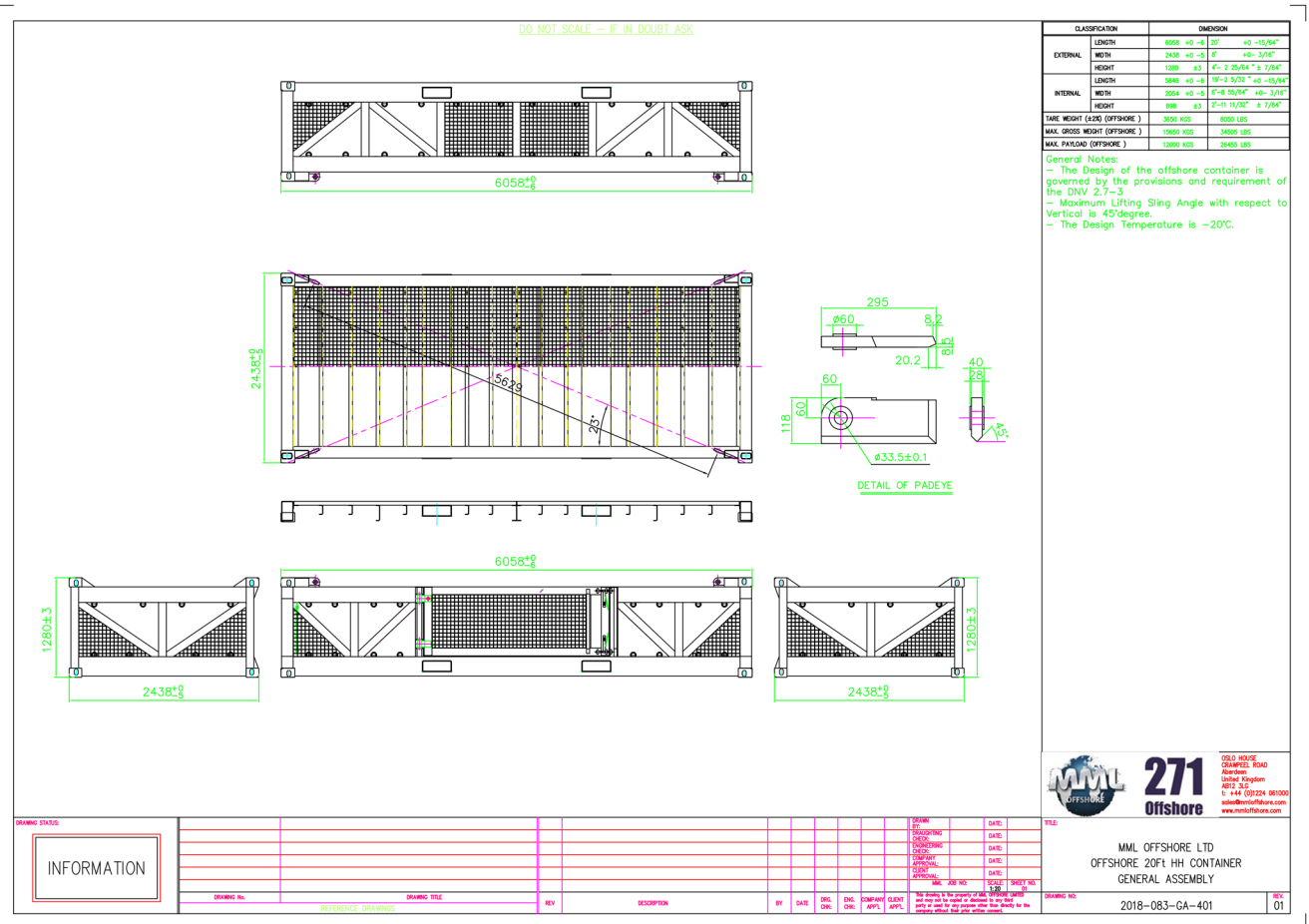


# DATA SHEET

## 20x8FT HALF HEIGHT SUBSEA BASKET

# 271

Offshore



DRIVING NO.	REFERENCE DRAWINGS	DRIVING TITLE	REV	DESCRIPTION	BY	DATE	ENL. CHK.	DRG. CHK.	COMPANY	CLIENT	APPL.	DATE	ISSUE	SCALE	DRIVING NO.



271 Offshore  
 3606 Jumeirah Bay,  
 X3 Tower,  
 X3 Cluster,  
 JLT,  
 Dubai

Tel : +971 (0) 4 442 9854  
 Web: www.271offshore.com  
 Email: sales@271offshore.com