



DATA SHEET

20FT HALF HEIGHT SUBSEA BASKET

271
Offshore



Specification:

- Structural Frame Constructed and Certified to DNV 2.7-3
- Operational Class R60 S23
- Design Temperature -20°C
- 4 leg sling assembly with Steel Ferrules - Sling Angle 45°
- Stackable
- Forklift Pockets
- Galvanised Grating Sides and Floor
- Internal Tie Down Points

	Length (mm)	Width (mm)	Height (mm)	Tare (kg)	MGW (kg)	Payload (kg)
External	6260	1190	850	2100	8000	5900
Internal	6055	990	630			

271 Offshore
3606 Jumeirah Bay,
X3 Tower,
X3 Cluster,
JLT,
Dubai

Tel : +971 (0) 4 442 9854
Web: www.271offshore.com
Email: sales@271offshore.com

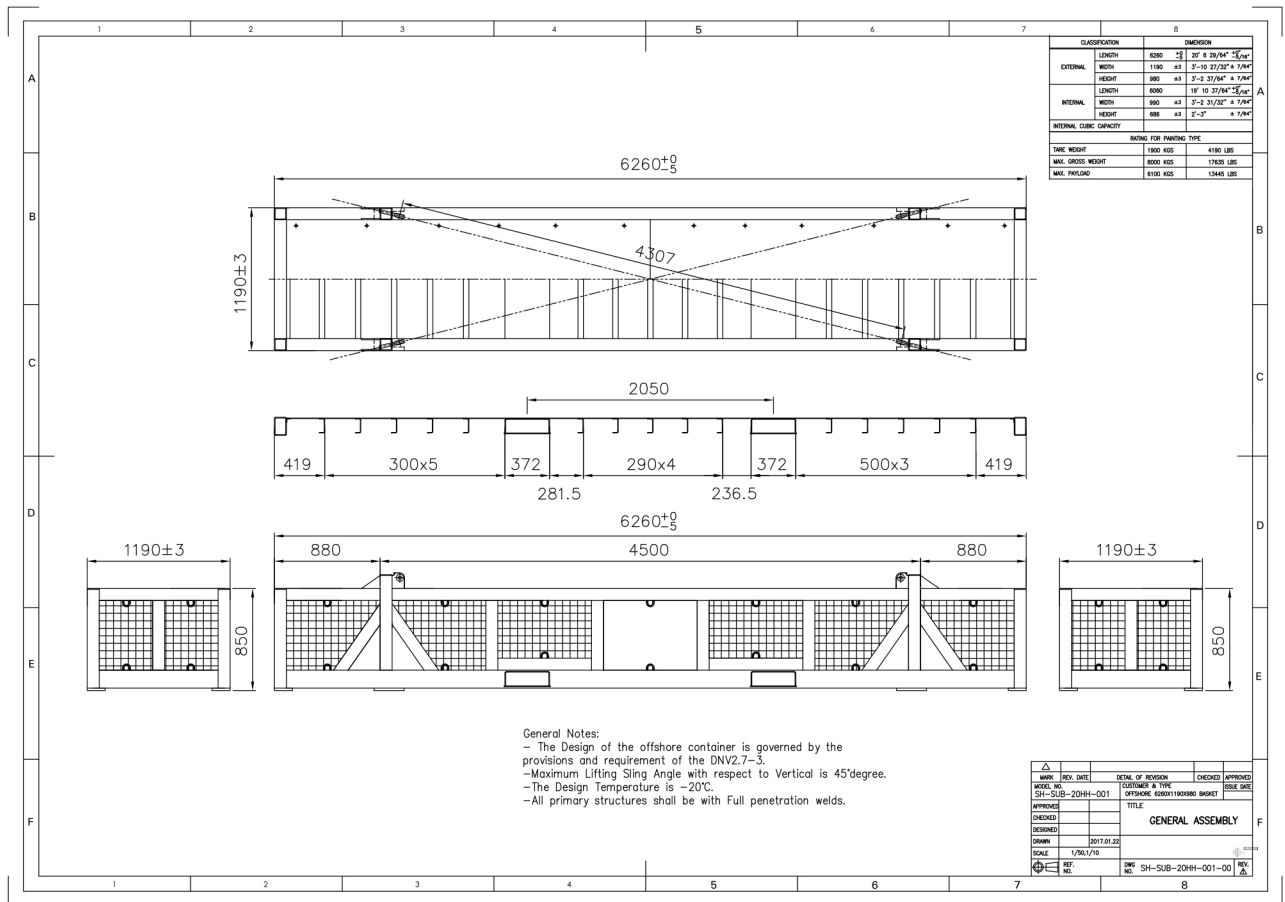


DATA SHEET

20FT HALF HEIGHT

SUBSEA BASKET

271
Offshore



271 Offshore
 3606 Jumeirah Bay,
 X3 Tower,
 X3 Cluster,
 JLT,
 Dubai

Tel : +971 (0) 4 442 9854
 Web: www.271offshore.com
 Email: sales@271offshore.com