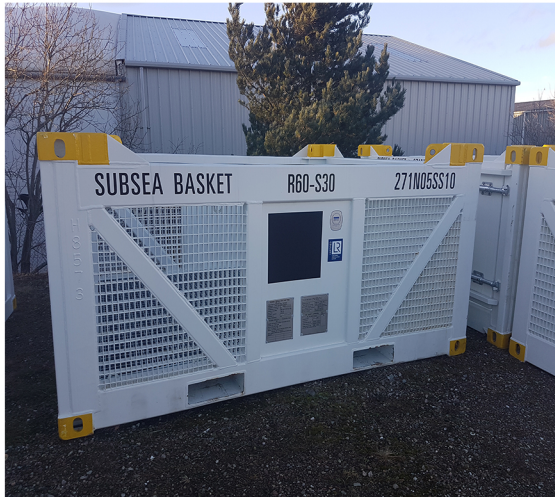




# DATA SHEET

## 10FT HALF HEIGHT SUBSEA BASKET

**271**  
Offshore



### Specification:

- Structural Frame Constructed and Certified to DNV 2.7-3 & CSC
- Operational Class R60 S30
- Design Temperature -20°C
- 4 leg sling assembly with Steel Ferrules - Sling Angle 45°
- Stackable due to ISO Corner Castings to Top & Bottom Corners
- Standard ISO Length and Width
- Forklift Pockets
- Galvanised Grating Sides and Floor
- Internal Tie Down Points
- Single Hinged End Access Door

	Length (mm)	Width (mm)	Height (mm)	Tare (kg)	MGW (kg)	Payload (kg)
External	2991	2438	1433	2450	14000	11550
Internal	2705	2115	1100			

271 Offshore  
3606 Jumeirah Bay,  
X3 Tower,  
X3 Cluster,  
JLT,  
Dubai

Tel : +971 (0) 4 442 9854  
Web: [www.271offshore.com](http://www.271offshore.com)  
Email: [sales@271offshore.com](mailto:sales@271offshore.com)



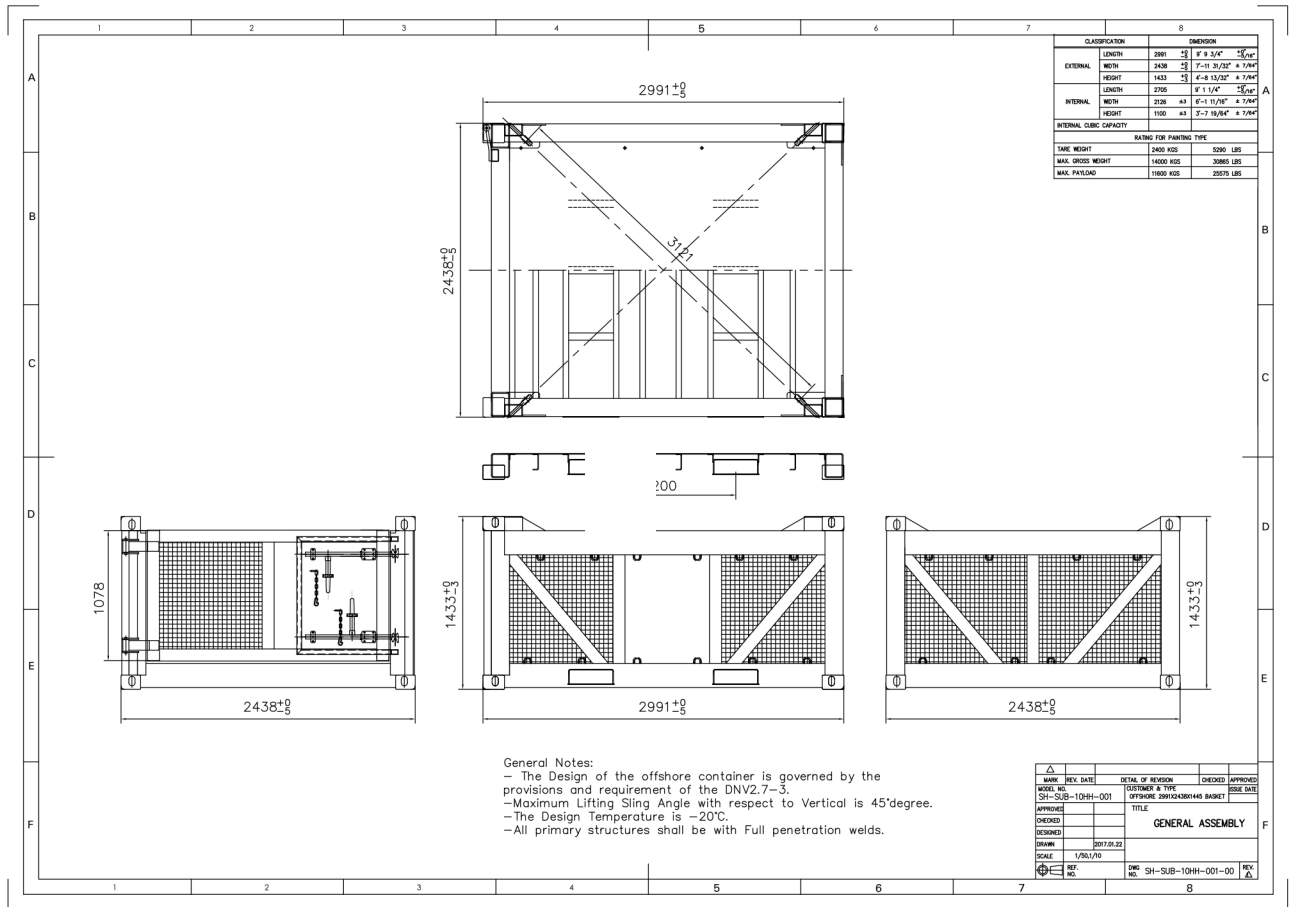
# DATA SHEET

## 10FT HALF HEIGHT

### SUBSEA BASKET

# 271

Offshore



271 Offshore  
 3606 Jumeirah Bay,  
 X3 Tower,  
 X3 Cluster,  
 JLT,  
 Dubai

Tel : +971 (0) 4 442 9854  
 Web: [www.271offshore.com](http://www.271offshore.com)  
 Email: [sales@271offshore.com](mailto:sales@271offshore.com)