



# DATA SHEET

## 10 FT CONTAINER

**271**  
Offshore



### Specification:

External nominal dimensions - 10' x 8' x 8' 6" (high), 3m x 2.43m x 2.59m (high)

Internal dimensions - 9' 2" x 7' 4" x 7' 3", 2.80m x 2.24m x 2.24m

Cubic capacity - 494ft<sup>3</sup> , 14m<sup>3</sup>

Tare weight - 5,210 lbs, 2,365 kgs

Payload - 17,085 lbs, 7,750 kgs

Max gross weight - 22,300lbs, 10,115 kgs

Slings - Supplied with DNV approved slings

Certification & Design - DNV 2.7-1, BS EN 12079:2006

	Length (mm)	Width (mm)	Height (mm)	Tare (kg)	MGW (kg)	Payload (kg)
External	2991	2438	2591	2250	10000	7750
Internal	2824	2342	2591	2250	10000	7750
Door Open		2330	2227	2250	10000	7750

271 Offshore  
3606 Jumeirah Bay,  
X3 Tower,  
X3 Cluster,  
JLT,  
Dubai

Tel : +971 (0) 4 442 9854  
Web: [www.271offshore.com](http://www.271offshore.com)  
Email: [sales@271offshore.com](mailto:sales@271offshore.com)

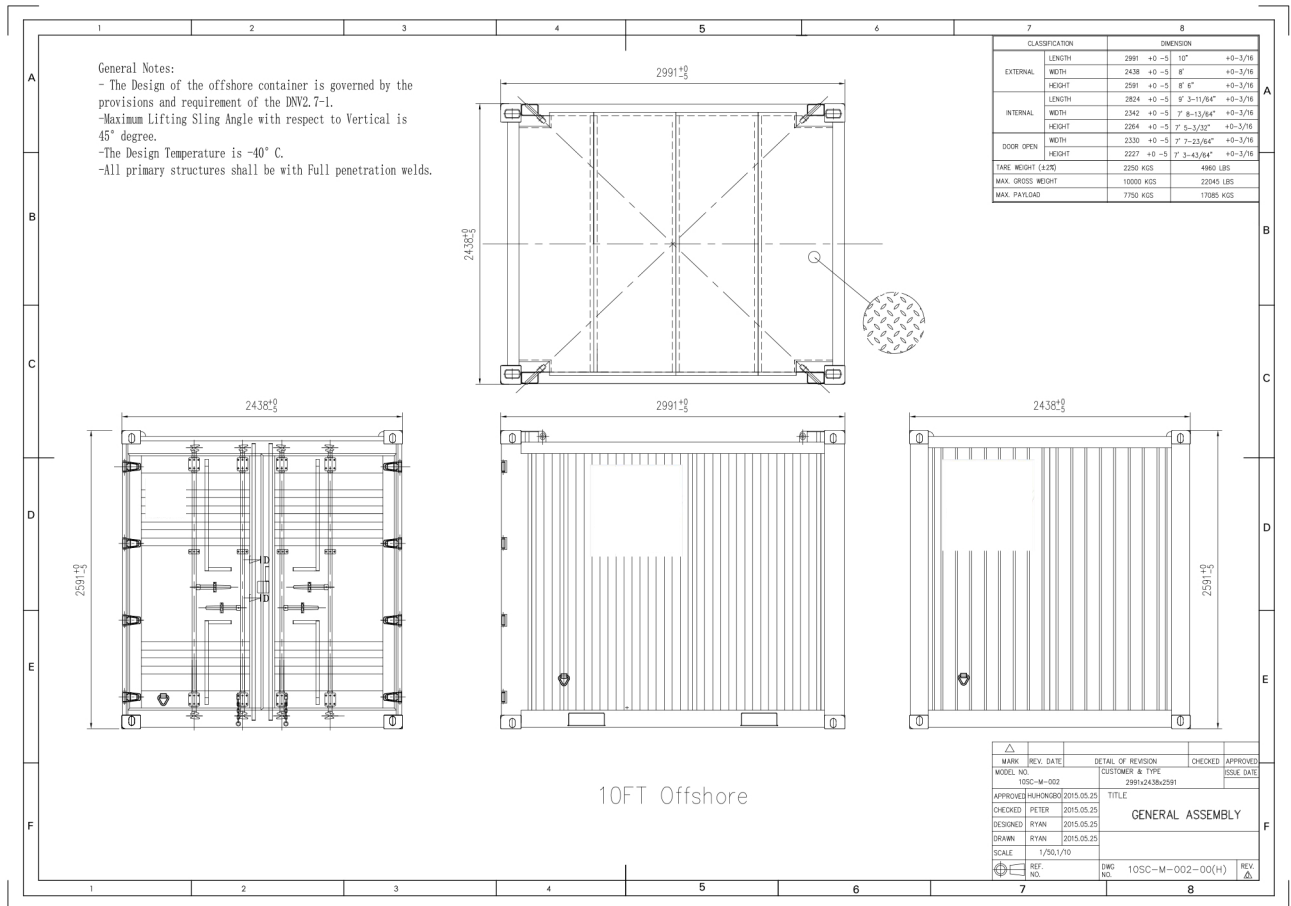


# DATA SHEET

## 10 FT CONTAINER

# 271

Offshore



271 Offshore  
 3606 Jumeirah Bay,  
 X3 Tower,  
 X3 Cluster,  
 JLT,  
 Dubai

Tel : +971 (0) 4 442 9854  
 Web: [www.271offshore.com](http://www.271offshore.com)  
 Email: [sales@271offshore.com](mailto:sales@271offshore.com)